



International Student & Scholar Services

Fall 2008

International Student Enrollment & Scholar Statistics

Julie Misa
Director

www.ips.uiuc.edu/iss

Contents

Summary2

International Student Enrollment by Country3

 Associated tables and charts8

 Regional Trends:

 Africa10

 Asia12

 Europe14

 Latin America16

 Middle East18

 North America20

 Oceania22

International Student Enrollment by Curricula24

 Associated tables and charts28

 Enrollment trends29

 New international student data31

International Scholar Data32

 Associated tables and charts37

Summary

For the Fall 2008 semester, UIUC welcomed 1,879 new international students to campus, a 22.5 percent increase from the number of new students who arrived in Fall 2007. The total number of enrolled international students rose by 9.6 percent from the previous year for a total of 5,794.

These students represent 123 countries from around the globe, with the top five countries of South Korea (25%), China (20%), India (13%), Taiwan (7%), and Canada (2%). Broken down by educational level, the enrollment of international students increased for undergraduates (9.6%) and decreased slightly for graduates (-.6%).

Seventy-eight percent of all international students come from Asia, with 71 percent of those coming from countries in East Asia. Asia saw the greatest percentage jump in enrollment for 2008, increasing by 33.0 percent from last year with the additional 463 students coming from that area of the world.

A majority of the international students are coming to UIUC in order to study in the field of Engineering. Approximately 36 percent are studying within the College of Engineering and of all the departments on campus, Electrical and Computer Engineering (558; 9.6%) is the most popular. The other top ranking departments in terms of international student enrollment include Computer Science (359; 6.2%), Civil and Environmental Engineering (272; 4.7%), Economics (223; 4.6%), and Mechanical Science and Engineering (220; 4.3%).

Sixty-two percent of international students are studying at the Graduate level, composing approximately 34.7 percent of all UIUC graduate students. International undergraduates account for 7.1 percent of the total UIUC undergraduate population (approximately 11.8% of these are non-degree exchange students), making the total percentage for all international students at UIUC 14.0 percent.

From July 2007 through June 2008, the number of international faculty and staff at UIUC increased from 1,438 to 1,541. Over 25% were working in the field of Engineering, followed by nearly 13% in Biological and Biomedical Sciences, and 12.78% in Physical Sciences. The most represented country was China, with 396 faculty and staff, followed by South Korea with 228, India with 183, Japan with 53, and Canada and Germany both with 51.

Fall 2008

International Student Enrollment by Country, Educational Level, and Gender

	Undergraduates					Graduates								Total	Grand Total	
	Degree		Non-Degree		Total	Master's		PhD		Professional		Non-Degree				Total
	Female	Male	Female	Male		Female	Male	Female	Male	Female	Male	Female	Male			
AFRICA	5	15	0	3	23	5	8	16	40	2	1	0	0	72	95	
<i>EASTERN AFRICA</i>	0	0	0	0	0	0	1	6	12	1	0	0	0	20	20	
Burundi	0	0	0	0	0	0	0	0	0	0	0	0	0	0	0	
Eritrea	0	0	0	0	0	0	0	0	1	0	0	0	0	1	1	
Ethiopia	0	0	0	0	0	0	0	0	2	0	0	0	0	2	2	
Kenya	0	0	0	0	0	0	0	3	5	1	0	0	0	9	9	
Madagascar	0	0	0	0	0	0	0	1	0	0	0	0	0	1	1	
Malawi	0	0	0	0	0	0	0	0	0	0	0	0	0	0	0	
Mauritius	0	0	0	0	0	0	0	1	1	0	0	0	0	2	2	
Rwanda	0	0	0	0	0	0	0	0	0	0	0	0	0	0	0	
Somalia	0	0	0	0	0	0	0	0	0	0	0	0	0	0	0	
Tanzania	0	0	0	0	0	0	1	1	3	0	0	0	0	5	5	
Uganda	0	0	0	0	0	0	0	0	0	0	0	0	0	0	0	
Zambia	0	0	0	0	0	0	0	0	0	0	0	0	0	0	0	
<i>CENTRAL AFRICA</i>	2	1	0	0	3	0	0	0	0	0	0	0	0	0	3	
Angola	1	0	0	0	1	0	0	0	0	0	0	0	0	0	1	
Cameroon	1	1	0	0	2	0	0	0	0	0	0	0	0	0	2	
Congo	0	0	0	0	0	0	0	0	0	0	0	0	0	0	0	
Sao Tome & Prindipe	0	0	0	0	0	0	0	0	0	0	0	0	0	0	0	
<i>NORTH AFRICA</i>	1	5	0	3	9	0	3	2	16	0	0	0	0	21	30	
Algeria	0	0	0	0	0	0	0	0	0	0	0	0	0	0	0	
Egypt	0	5	0	1	6	0	2	1	15	0	0	0	0	18	24	
Morocco	1	0	0	0	1	0	0	1	1	0	0	0	0	2	3	
Sudan	0	0	0	0	0	0	1	0	0	0	0	0	0	1	1	
Tunisia	0	0	0	2	2	0	0	0	0	0	0	0	0	0	2	
<i>SOUTHERN AFRICA</i>	1	2	0	0	3	0	1	3	4	0	0	0	0	8	11	
Botswana	0	1	0	0	1	0	0	0	0	0	0	0	0	0	1	
South Africa	1	1	0	0	2	0	1	3	3	0	0	0	0	7	9	
Zimbabwe	0	0	0	0	0	0	0	0	1	0	0	0	0	1	1	
<i>WESTERN AFRICA</i>	1	7	0	0	8	5	3	5	8	1	1	0	0	23	31	
Benin	0	0	0	0	0	0	0	0	0	0	0	0	0	0	0	
Burkina Faso	0	0	0	0	0	0	0	1	1	0	0	0	0	2	2	
Cote d'Ivoire	0	0	0	0	0	1	1	0	2	0	0	0	0	4	4	
Gambia, The	0	0	0	0	0	0	0	0	0	0	0	0	0	0	0	
Ghana	0	0	0	0	0	0	1	1	2	0	1	0	0	5	5	
Liberia	0	0	0	0	0	0	0	0	0	0	0	0	0	0	0	
Mali	0	1	0	0	1	0	0	0	0	0	0	0	0	0	1	
Niger	0	0	0	0	0	0	0	0	1	0	0	0	0	1	1	
Nigeria	1	6	0	0	7	3	1	1	2	1	0	0	0	8	15	
Senegal	0	0	0	0	0	1	0	1	0	0	0	0	0	2	2	
Sierra Leone	0	0	0	0	0	0	0	1	0	0	0	0	0	1	1	

Fall 2008

International Student Enrollment by Country, Educational Level, and Gender

	Undergraduates					Graduates									Grand Total
	Degree		Non-Degree		Total	Master's		PhD		Professional		Non-Degree		Total	
	Female	Male	Female	Male		Female	Male	Female	Male	Female	Male	Female	Male		
ASIA	648	1146	33	37	1864	432	478	706	1017	9	0	4	1	2647	4511
<i>EAST ASIA</i>	478	773	20	28	1299	333	285	577	702	8	0	2	0	1907	3206
China (PRC)	104	133	6	14	257	176	91	248	368	4	0	1	0	888	1145
Hong Kong	18	18	3	0	39	3	3	5	17	0	0	0	0	28	67
Japan	10	14	4	2	30	8	15	18	20	0	0	0	0	61	91
Korea, Republic of	294	548	6	5	853	70	123	215	207	3	0	1	0	619	1472
Macau	4	1	0	0	5	1	0	2	0	0	0	0	0	3	8
Mongolia	0	0	0	0	0	0	0	1	0	0	0	0	0	1	1
Taiwan (ROC)	48	59	1	7	115	75	53	88	90	1	0	0	0	307	422
<i>SOUTH AND CENTRAL ASIA</i>	66	247	1	4	318	61	141	86	233	0	0	1	1	523	841
Afghanistan	0	0	0	0	0	0	1	0	0	0	0	0	0	1	1
Bangladesh	0	2	0	0	2	1	5	6	19	0	0	0	0	31	33
India	58	234	1	2	295	54	114	74	192	0	0	1	1	436	731
Kazakhstan	3	3	0	0	6	2	3	2	1	0	0	0	0	8	14
Kyrgyzstan	0	0	0	0	0	0	0	0	0	0	0	0	0	0	0
Maldives	0	0	0	0	0	0	0	0	0	0	0	0	0	0	0
Nepal	0	0	0	0	0	0	0	1	3	0	0	0	0	4	4
Pakistan	4	8	0	2	14	3	18	2	15	0	0	0	0	38	52
Sri Lanka	1	0	0	0	1	1	0	1	2	0	0	0	0	4	5
Uzbekistan	0	0	0	0	0	0	0	0	1	0	0	0	0	1	1
<i>SOUTHEAST ASIA</i>	104	126	12	5	247	38	52	43	82	1	0	1	0	217	464
Brunei	2	0	0	0	2	0	0	0	0	0	0	0	0	0	2
Cambodia	0	0	0	0	0	0	0	0	0	0	0	0	0	0	0
Indonesia	26	37	1	0	64	10	16	2	6	0	0	0	0	34	98
Laos	0	0	0	0	0	0	1	0	0	0	0	0	0	1	1
Malaysia	37	39	1	0	77	2	11	6	6	0	0	0	0	25	102
Myanmar (Burma)	0	1	0	0	1	1	0	0	1	0	0	0	0	2	3
Philippines	3	2	0	0	5	1	0	8	5	0	0	0	0	14	19
Singapore	25	29	10	5	69	3	3	9	19	1	0	1	0	36	105
Thailand	11	16	0	0	27	19	16	12	16	0	0	0	0	63	90
Vietnam	0	2	0	0	2	2	5	6	29	0	0	0	0	42	44

Fall 2008

International Student Enrollment by Country, Educational Level, and Gender

	Undergraduates					Graduates									Grand Total
	Degree		Non-Degree		Total	Master's		PhD		Professional		Non-Degree		Total	
	Female	Male	Female	Male		Female	Male	Female	Male	Female	Male	Female	Male		
EUROPE	9	20	52	94	175	25	40	95	101	1	0	8	5	275	450
<i>EASTERN EUROPE</i>	3	7	0	1	11	12	3	45	42	1	0	1	0	104	115
Albania	0	0	0	1	1	1	0	2	0	0	0	0	0	3	4
Armenia	0	0	0	0	0	0	0	1	1	0	0	0	0	2	2
Azerbaijan	0	1	0	0	1	0	0	0	0	0	0	0	0	0	1
Belarus	0	0	0	0	0	0	0	0	0	0	0	0	0	0	0
Bosnia and Herzegovina	0	0	0	0	0	1	0	0	0	0	0	0	0	1	1
Bulgaria	0	0	0	0	0	0	0	1	5	1	0	0	0	7	7
Croatia	0	0	0	0	0	0	0	0	1	0	0	0	0	1	1
Czech Republic	0	1	0	0	1	0	0	2	1	0	0	0	0	3	4
Estonia	0	0	0	0	0	0	0	0	1	0	0	0	0	1	1
Georgia	0	0	0	0	0	0	0	0	0	0	0	0	0	0	0
Hungary	0	0	0	0	0	0	0	0	0	0	0	0	0	0	0
Latvia	0	0	0	0	0	0	0	0	0	0	0	1	0	1	1
Lithuania	0	0	0	0	0	0	0	0	0	0	0	0	0	0	0
Moldova	0	0	0	0	0	0	0	0	1	0	0	0	0	1	1
Montenegro	0	0	0	0	0	1	0	0	1	0	0	0	0	2	2
Poland	0	1	0	0	1	0	1	6	1	0	0	0	0	8	9
Romania	0	0	0	0	0	3	0	14	9	0	0	0	0	26	26
Russia	2	2	0	0	4	2	1	7	10	0	0	0	0	20	24
Serbia	0	0	0	0	0	3	1	5	6	0	0	0	0	15	15
Slovakia	0	0	0	0	0	0	0	1	0	0	0	0	0	1	1
Ukraine	1	2	0	0	3	1	0	6	5	0	0	0	0	12	15
<i>WESTERN EUROPE</i>	6	13	52	93	164	13	37	50	59	0	0	7	5	171	335
Austria	0	0	9	13	22	0	0	1	4	0	0	1	0	6	28
Belgium	0	0	1	4	5	1	1	1	2	0	0	0	0	5	10
Denmark	0	0	0	0	0	0	1	1	0	0	0	0	0	2	2
Finland	0	0	0	0	0	0	0	2	0	0	0	0	0	2	2
France	0	0	9	13	22	3	9	6	4	0	0	5	0	27	49
Germany	1	2	6	10	19	1	9	5	12	0	0	1	5	33	52
Greece	0	1	0	0	1	0	5	4	12	0	0	0	0	21	22
Iceland	0	0	0	0	0	1	0	0	0	0	0	0	0	1	1
Ireland	0	0	0	0	0	0	0	0	3	0	0	0	0	3	3
Italy	0	0	7	16	23	0	6	5	8	0	0	0	0	19	42
Netherlands	0	0	0	4	4	0	0	1	2	0	0	0	0	3	7
Norway	0	2	0	0	2	0	0	0	1	0	0	0	0	1	3
Portugal	0	1	0	0	1	1	0	3	0	0	0	0	0	4	5
Spain	1	0	2	10	13	4	5	15	7	0	0	0	0	31	44
Sweden	0	1	5	3	9	0	0	2	0	0	0	0	0	2	11
Switzerland	0	0	0	0	0	0	0	0	1	0	0	0	0	1	1
United Kingdom	4	6	13	20	43	2	1	4	3	0	0	0	0	10	53

Fall 2008

International Student Enrollment by Country, Educational Level, and Gender

	Undergraduates					Graduates								Total	Grand Total	
	Degree		Non-Degree		Total	Master's		PhD		Professional		Non-Degree				Total
	Female	Male	Female	Male		Female	Male	Female	Male	Female	Male	Female	Male			
LATIN AMERICA	9	23	3	22	57	27	45	54	126	1	2	0	0	255	312	
CARIBBEAN	1	0	0	0	1	3	6	7	4	0	0	0	0	20	21	
Bahamas	0	0	0	0	0	0	1	1	0	0	0	0	0	2	2	
Barbados	1	0	0	0	1	0	1	0	0	0	0	0	0	1	2	
Cayman Islands	0	0	0	0	0	0	0	0	0	0	0	0	0	0	0	
Cuba	0	0	0	0	0	0	0	0	0	0	0	0	0	0	0	
Dominican Republic	0	0	0	0	0	1	3	0	1	0	0	0	0	5	5	
Haiti	0	0	0	0	0	0	0	1	1	0	0	0	0	2	2	
Jamaica	0	0	0	0	0	1	1	3	1	0	0	0	0	6	6	
St. Vincent	0	0	0	0	0	0	0	0	0	0	0	0	0	0	0	
Trinidad & Tobago	0	0	0	0	0	1	0	2	1	0	0	0	0	4	4	
CENTRAL AMERICA & MEXICO	2	9	0	3	14	4	15	11	26	0	0	0	0	56	70	
Belize	0	1	0	0	1	0	0	0	0	0	0	0	0	0	1	
Costa Rica	0	1	0	0	1	0	0	1	1	0	0	0	0	2	3	
El Salvador	0	0	0	0	0	0	0	0	2	0	0	0	0	2	2	
Guatemala	0	2	0	0	2	1	4	0	1	0	0	0	0	6	8	
Honduras	0	1	0	0	1	2	2	1	1	0	0	0	0	6	7	
Mexico	2	4	0	3	9	1	7	9	19	0	0	0	0	36	45	
Nicaragua	0	0	0	0	0	0	1	0	0	0	0	0	0	1	1	
Panama	0	0	0	0	0	0	1	0	2	0	0	0	0	3	3	
SOUTH AMERICA	6	14	3	19	42	20	24	36	96	1	2	0	0	179	221	
Argentina	1	1	1	2	5	2	3	8	14	0	0	0	0	27	32	
Bolivia	0	0	0	0	0	1	1	3	1	0	0	0	0	6	6	
Brazil	2	4	2	7	15	5	3	14	30	0	0	0	0	52	67	
Chile	0	0	0	1	1	0	1	0	12	0	0	0	0	13	14	
Colombia	0	2	0	0	2	5	5	5	20	0	1	0	0	36	38	
Ecuador	0	2	0	9	11	1	6	2	6	0	0	0	0	15	26	
Guyana	0	0	0	0	0	0	0	1	0	0	0	0	0	1	1	
Paraguay	0	1	0	0	1	0	1	0	1	0	0	0	0	2	3	
Peru	2	2	0	0	4	3	3	2	7	0	0	0	0	15	19	
Suriname	0	0	0	0	0	0	0	0	0	0	0	0	0	0	0	
Uruguay	0	0	0	0	0	2	0	0	2	0	0	0	0	4	4	
Venezuela	1	2	0	0	3	1	1	1	3	1	1	0	0	8	11	

Fall 2008
International Student Enrollment by Country, Educational Level, and Gender

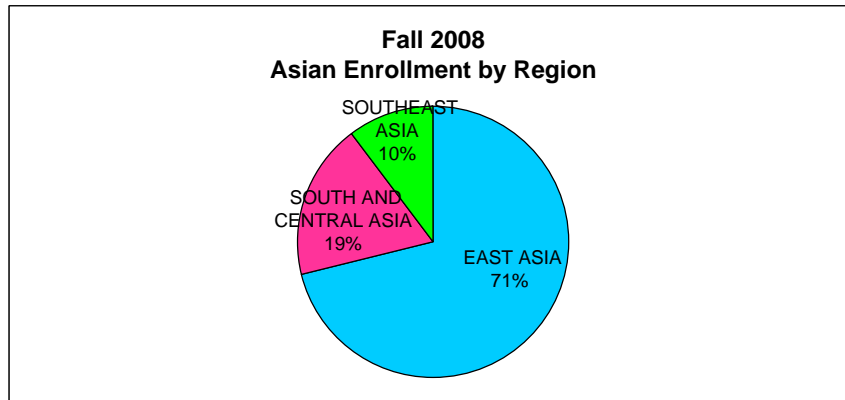
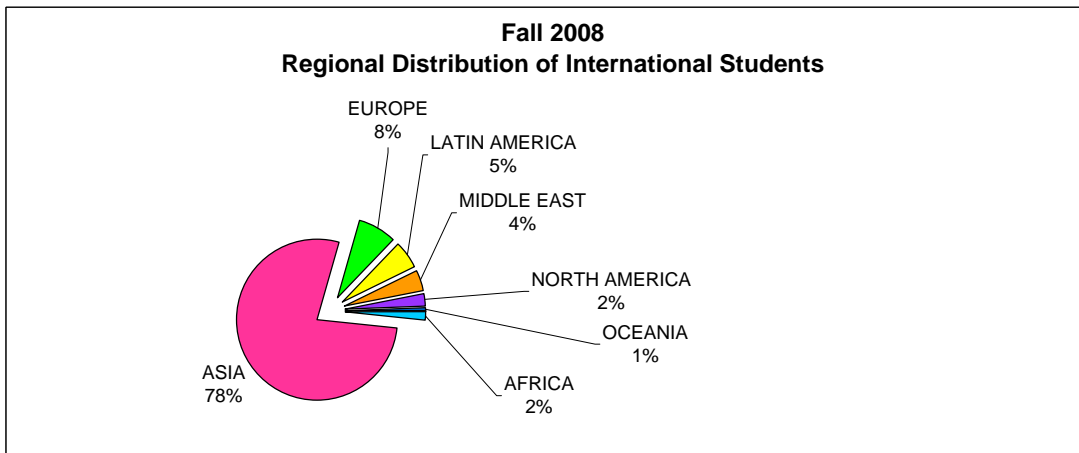
	Undergraduates					Graduates								Total	Grand Total	
	Degree		Non-Degree		Total	Master's		PhD		Professional		Non-Degree				Total
	Female	Male	Female	Male		Female	Male	Female	Male	Female	Male	Female	Male			
MIDDLE EAST	1	11	2	4	18	23	46	63	103	0	1	0	0	236	254	
Bahrain	0	1	0	0	1	0	0	0	1	0	0	0	0	1	2	
Cyprus	0	1	0	0	1	0	0	1	3	0	0	0	0	4	5	
Iran	0	0	0	0	0	7	6	26	53	0	0	0	0	92	92	
Iraq	0	0	0	0	0	1	0	0	0	0	0	0	0	1	1	
Israel	0	2	1	1	4	2	1	0	4	0	0	0	0	7	11	
Jordan	1	1	1	1	4	1	4	2	3	0	0	0	0	10	14	
Kuwait	0	1	0	0	1	0	0	0	0	0	0	0	0	0	1	
Lebanon	0	0	0	1	1	2	1	2	7	0	0	0	0	12	13	
Oman	0	0	0	0	0	0	0	0	1	0	0	0	0	1	1	
Palestinian Authority	0	1	0	0	1	0	0	2	2	0	0	0	0	4	5	
Qatar	0	0	0	0	0	0	0	0	0	0	0	0	0	0	0	
Saudi Arabia	0	1	0	0	1	0	2	0	1	0	0	0	0	3	4	
Syria	0	0	0	0	0	0	0	1	0	0	0	0	0	1	1	
Turkey	0	2	0	1	3	10	32	29	28	0	1	0	0	100	103	
United Arab Emirates	0	1	0	0	1	0	0	0	0	0	0	0	0	0	1	
Yemen	0	0	0	0	0	0	0	0	0	0	0	0	0	0	0	
NORTH AMERICA	20	34	0	0	54	5	9	18	39	2	5	0	0	78	132	
Canada	20	34	0	0	54	5	9	18	39	2	5	0	0	78	132	
OCEANIA	8	6	5	7	26	4	4	0	6	0	0	0	0	14	40	
Australia	6	6	5	6	23	1	3	0	4	0	0	0	0	8	31	
Fiji	0	0	0	0	0	0	0	0	0	0	0	0	0	0	0	
New Zealand	2	0	0	1	3	3	1	0	2	0	0	0	0	6	9	
TOTALS	700	1255	95	167	2217	521	630	952	1432	15	9	12	6	3577	5794	

Fall 2008 Regional Summary

	Undergraduates					Graduates								Grand Total	
	Degree		Exchange		Total	Master's		PhD		Professional		Non-Degree			Total
	Female	Male	Female	Male		Female	Male	Female	Male	Female	Male	Female	Male		
AFRICA	5	15	0	3	23	5	8	16	40	2	1	0	0	72	95
ASIA	648	1146	33	37	1864	432	478	706	1017	9	0	4	1	2647	4511
EUROPE	9	20	52	94	175	25	40	95	101	1	0	8	5	275	450
LATIN AMERICA	9	23	3	22	57	27	45	54	126	1	2	0	0	255	312
MIDDLE EAST	1	11	2	4	18	23	46	63	103	0	1	0	0	236	254
NORTH AMERICA	20	34	0	0	54	5	9	18	39	2	5	0	0	78	132
OCEANIA	8	6	5	7	26	4	4	0	6	0	0	0	0	14	40
TOTAL ENROLLMENT	700	1255	95	167	2217	521	630	952	1432	15	9	12	6	3577	5794

Regional Summary 2003-2008

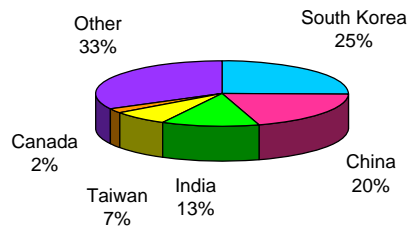
	2003	2004	2005	2006	2007	2008	% Change Over Six Years	% Change From Last Year
Africa	116	103	84	93	90	95	-18.1%	5.6%
Asia	3391	3612	3639	3874	4048	4511	33.0%	11.4%
Europe	518	500	455	462	437	450	-13.1%	3.0%
Latin America	340	348	302	309	299	312	-8.2%	4.3%
Middle East	255	265	266	263	251	254	-0.4%	1.2%
North America	102	102	110	110	124	132	29.4%	6.5%
Oceania	47	35	48	35	39	40	-14.9%	2.6%
Total	4769	4965	4904	5146	5288	5794	21.5%	9.6%



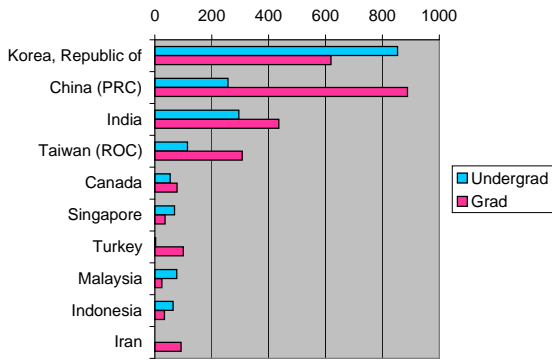
Fall 2008 Top Ten Countries

	Undergrad	Grad	Female	Male	Total
Korea, Republic of	853	619	589	883	1472
China (PRC)	257	888	539	606	1145
India	295	436	188	543	731
Taiwan (ROC)	115	307	213	209	422
Canada	54	78	45	87	132
Singapore	69	36	49	56	105
Turkey	3	100	39	64	103
Malaysia	77	25	46	56	102
Indonesia	64	34	39	59	98
Iran	0	92	33	59	92

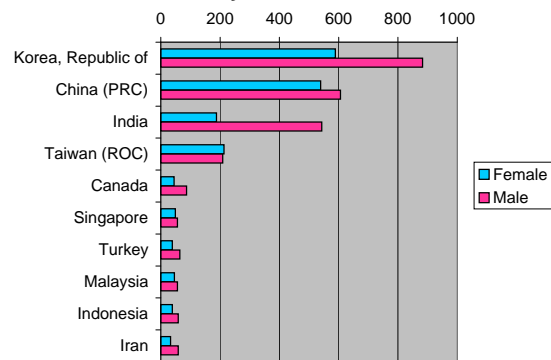
Largest Countries Represented Fall 2008



Top Ten Countries by Class

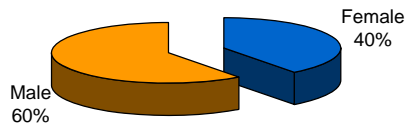


Top Ten Countries by Gender

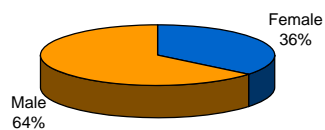


Fall 2008 Breakdown by Gender

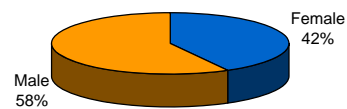
Overall International Population



Undergraduate International Population



Graduate International Population

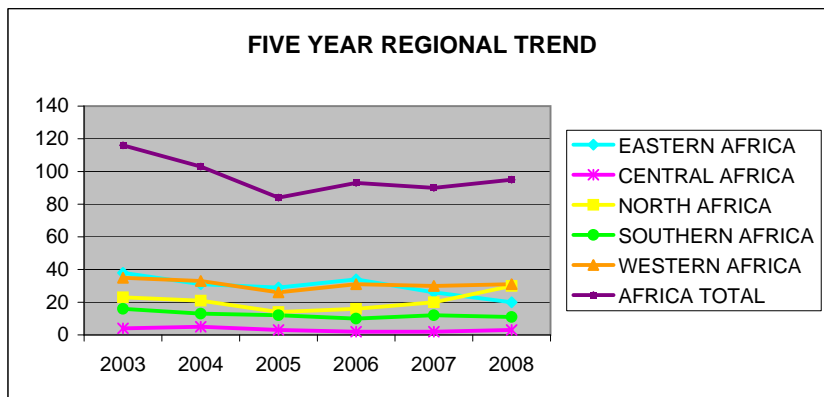




Produced by the Cartographic Research Lab
University of Alabama

Africa

Enrollment of international students at the University of Illinois at Urbana-Champaign whose Country of Citizenship is in Africa



	2003	2004	2005	2006	2007	2008
EASTERN AFRICA	38	31	29	34	26	20
Burundi	1	1	1	1	0	0
Eritrea	0	0	0	0	1	1
Ethiopia	5	7	8	7	4	2
Kenya	21	16	13	18	13	9
Madagascar	0	0	1	1	0	1
Malawi	1	1	1	1	0	0
Mauritius	1	1	1	1	1	2
Rwanda	0	0	0	0	0	0
Somalia	1	1	1	0	0	0
Tanzania	6	3	3	3	4	5
Uganda	1	1	0	1	1	0
Zambia	1	0	0	1	2	0
CENTRAL AFRICA	4	5	3	2	2	3
Angola	1	1	0	0	0	1
Cameroon	3	3	2	2	2	2
Congo	0	1	1	0	0	0
Sao Tome & Prindipe	0	0	0	0	0	0
NORTH AFRICA	23	21	14	16	20	30
Algeria	1	1	0	0	0	0
Egypt	17	15	12	14	17	24
Morocco	4	3	2	2	2	3
Sudan	0	0	0	0	1	1
Tunisia	1	2	0	0	0	2
SOUTHERN AFRICA	16	13	12	10	12	11
Botswana	2	2	1	0	1	1
South Africa	14	11	11	9	10	9
Zimbabwe	0	0	0	1	1	1
WESTERN AFRICA	35	33	26	31	30	31
Benin	0	0	0	0	0	0
Burkina Faso	1	2	1	2	1	2
Cote d'Ivoire	3	3	2	2	4	4
Gambia, The	1	1	0	1	0	0
Ghana	12	8	9	8	8	5
Liberia	3	3	0	0	0	0
Mali	1	1	0	1	1	1
Niger	0	1	1	1	1	1
Nigeria	10	9	10	13	11	15
Senegal	3	3	1	1	2	2
Sierra Leone	1	2	2	2	2	1
AFRICA TOTAL	116	103	84	93	90	95

Fall 2008

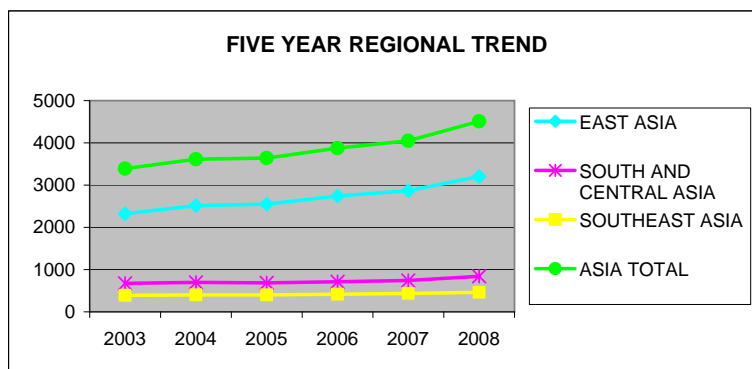
Top 5 African Countries	Total	% Change Over 6 Years	% Change from last year
Egypt	24	41.2%	41.2%
Nigeria	15	50.0%	36.4%
Kenya	9	-57.1%	-30.8%
South Africa	9	-35.7%	-10.0%
Ghana	5	-58.3%	-37.5%



Produced by the Cartographic Research Lab
University of Alabama

Asia

Enrollment of international students at the University of Illinois at Urbana-Champaign whose Country of Citizenship is in Asia



	2003	2004	2005	2006	2007	2008
EAST ASIA	2323	2514	2549	2744	2867	3206
China (PRC)	881	883	873	931	950	1145
Hong Kong	58	78	75	69	68	67
Japan	108	106	85	96	91	91
Korea, Republic of	952	1096	1149	1220	1308	1472
Macau	5	7	6	7	6	8
Mongolia	2	2	3	3	3	1
Taiwan (ROC)	317	342	358	418	441	422
SOUTH AND CENTRAL ASIA	676	698	687	712	744	841
Afghanistan	0	0	0	0	0	1
Bangladesh	12	15	13	19	26	33
India	608	624	621	624	645	731
Kazakhstan	3	3	3	18	15	14
Kyrgyzstan	1	0	1	1	1	0
Maldives	0	0	0	1	1	0
Nepal	6	8	6	5	4	4
Pakistan	34	34	32	32	42	52
Sri Lanka	9	10	8	9	8	5
Uzbekistan	3	4	3	3	2	1
SOUTHEAST ASIA	392	400	403	418	437	464
Brunei	0	0	0	0	2	2
Cambodia	0	1	2	1	0	0
Indonesia	71	68	68	69	84	98
Laos	1	1	0	0	1	1
Malaysia	97	98	95	99	96	102
Myanmar (Burma)	3	5	7	6	4	3
Philippines	13	13	14	24	21	19
Singapore	107	97	83	93	97	105
Thailand	88	72	73	71	82	90
Vietnam	12	45	61	55	50	44
ASIA TOTAL	3391	3612	3639	3874	4048	4511

Fall 2008

Top 5 Asian Countries	Total	% Change Over 6 Years	% Change from last year
Korea, Republic of	1472	54.6%	12.5%
China (PRC)	1145	30.0%	20.5%
India	731	20.2%	13.3%
Taiwan (ROC)	422	33.1%	-4.3%
Singapore	105	-1.9%	8.2%

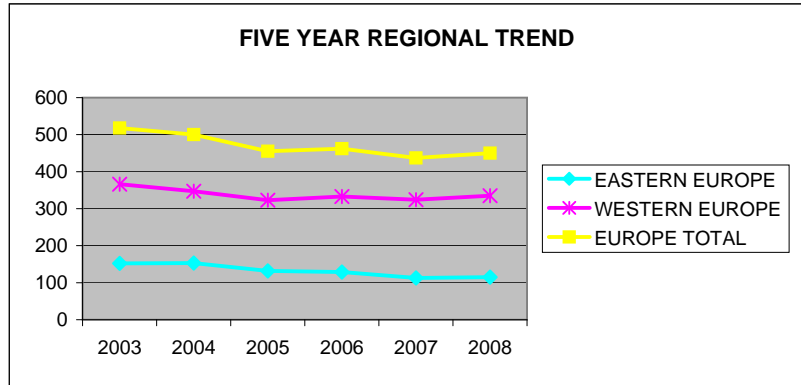


Produced by the Cartographic Research Lab
University of Alabama



Europe

Enrollment of international students at the University of Illinois at Urbana-Champaign whose Country of Citizenship is in Europe

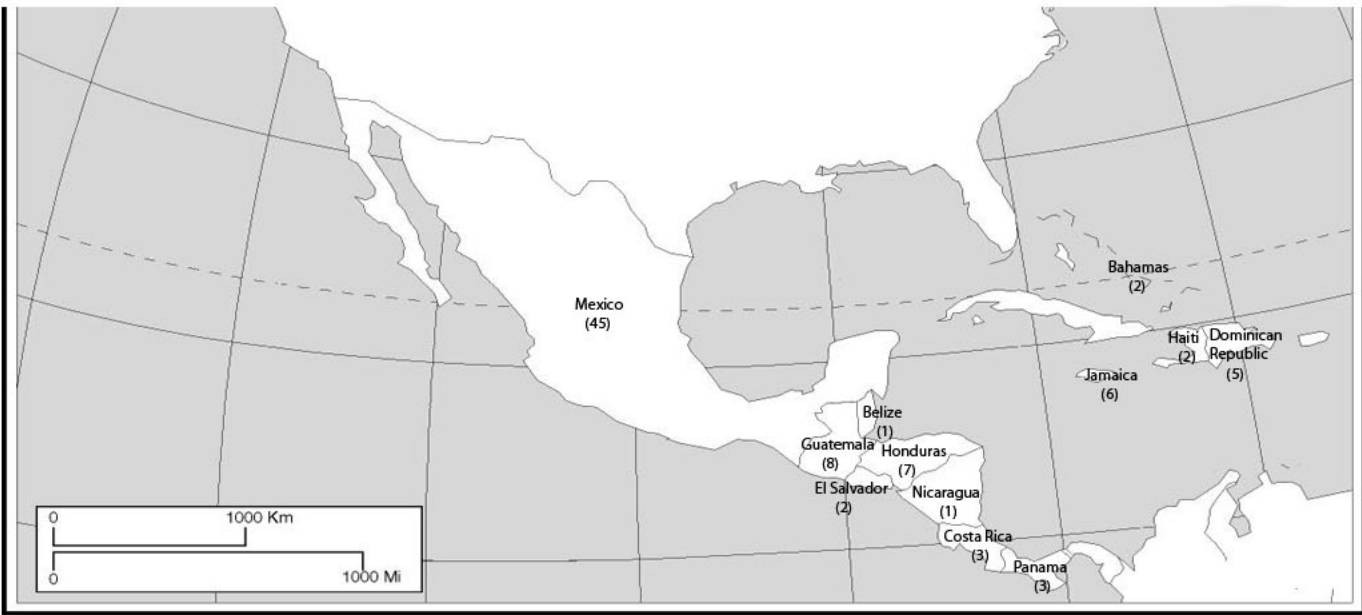


	2003	2004	2005	2006	2007	2008
EASTERN EUROPE	152	153	132	129	113	115
Albania	4	3	2	2	2	4
Armenia	3	2	3	3	2	2
Azerbaijan	1	2	0	1	1	1
Belarus	7	5	4	4	1	0
Bosnia and Herzegovina	0	0	0	0	0	1
Bulgaria	14	10	9	5	7	7
Croatia	4	5	5	3	2	1
Czech Republic	2	6	6	5	5	4
Estonia	0	1	1	1	1	1
Georgia	5	3	1	1	0	0
Hungary	1	0	0	1	1	0
Latvia	0	0	1	2	0	1
Lithuania	5	3	3	3	1	0
Moldova	0	0	0	1	1	1
Poland	8	12	11	12	9	9
Romania	34	39	33	30	27	26
Russia	35	31	24	25	20	24
Serbia & Montenegro*	17	17	14	15	16	17
Slovakia	0	1	1	1	2	1
Ukraine	12	13	14	14	15	15
WESTERN EUROPE	366	347	323	333	324	335
Austria	35	24	33	33	29	28
Belgium	5	8	7	4	8	10
Denmark	7	6	5	9	8	2
Finland	4	3	2	2	2	2
France	54	47	41	53	48	49
Germany	67	64	61	52	51	52
Greece	28	29	23	25	27	22
Iceland	0	1	0	1	3	1
Ireland	8	8	7	3	3	3
Italy	15	16	13	13	23	42
Netherlands	11	10	4	9	8	7
Norway	1	4	3	1	1	3
Portugal	6	4	4	7	7	5
Spain	42	34	41	42	40	44
Sweden	6	6	11	14	11	11
Switzerland	4	3	2	2	2	1
United Kingdom	73	80	66	63	53	53
EUROPE TOTAL	518	500	455	462	437	450

Fall 2008

Top 5 European Countries	Total	% Change Over 6 Years	% Change from last year
United Kingdom	53	-27.4%	0.0%
Germany	52	-22.4%	2.0%
France	49	9.3%	2.0%
Spain	44	4.8%	10.0%
Italy	42	180.0%	82.6%

* Serbia and Montenegro are now separate countries, however they are listed together here because historical data would not be available otherwise.



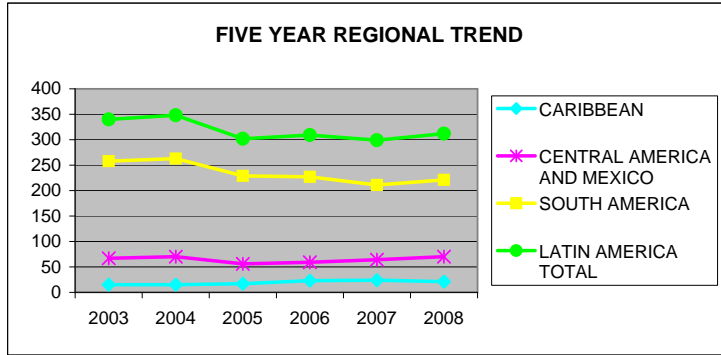
Produced by the Cartographic Research Lab
University of Alabama



Produced by the Cartographic Research Lab
University of Alabama

Latin America

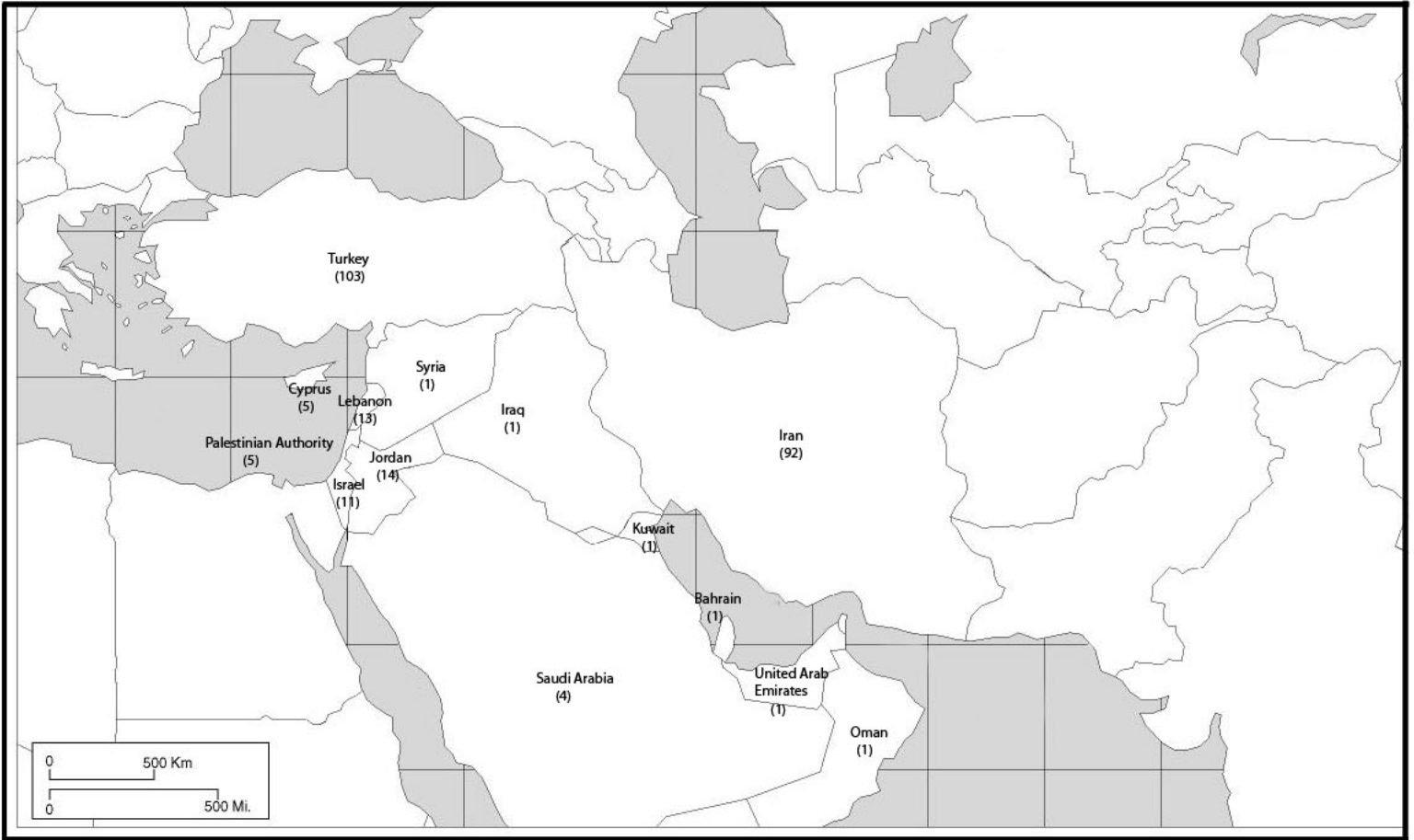
Enrollment of international students at the University of Illinois at Urbana-Champaign whose Country of Citizenship is in Latin America



	2003	2004	2005	2006	2007	2008
CARIBBEAN	15	15	17	23	24	21
Bahamas	0	0	1	2	2	2
Barbados	1	1	1	0	1	2
Cayman Islands	0	0	0	0	1	0
Cuba	0	0	0	0	0	0
Dominican Republic	3	1	3	7	5	5
Haiti	2	2	1	1	2	2
Jamaica	2	5	8	7	8	6
St. Vincent	0	1	1	0	0	0
Trinidad & Tobago	7	5	2	6	5	4
CENTRAL AMERICA AND MEXICO	67	70	56	59	64	70
Belize	3	4	5	5	3	1
Costa Rica	4	4	1	2	3	3
El Salvador	0	1	2	2	2	2
Guatemala	5	5	6	5	5	8
Honduras	6	6	5	5	5	7
Mexico	45	46	33	39	44	45
Nicaragua	0	1	2	0	0	1
Panama	4	3	2	1	2	3
SOUTH AMERICA	258	263	229	227	211	221
Argentina	58	64	52	45	34	32
Bolivia	6	6	5	6	6	6
Brazil	65	69	67	69	60	67
Chile	19	15	12	11	14	14
Colombia	42	45	31	39	37	38
Ecuador	32	30	24	21	26	26
Guyana	0	2	4	3	2	1
Paraguay	1	0	1	4	4	3
Peru	15	12	18	19	18	19
Suriname	0	0	0	0	0	0
Uruguay	6	6	5	4	4	4
Venezuela	14	14	10	6	6	11
LATIN AMERICA TOTAL	340	348	302	309	299	312

Fall 2008

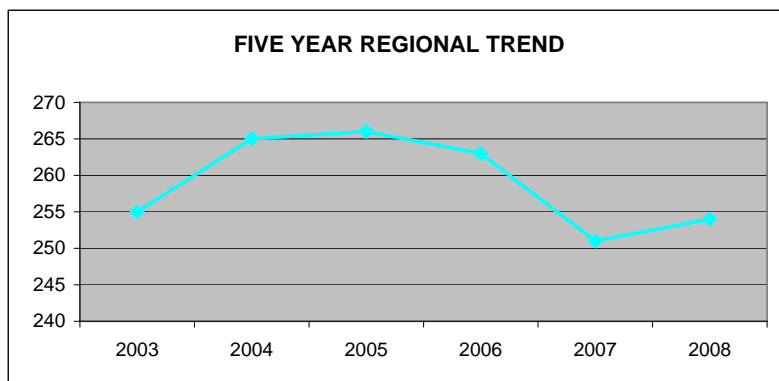
Top 5 Latin American Countries	Total	% Change Over 6 Years	% Change from last year
Brazil	67	3.1%	11.7%
Mexico	45	0.0%	2.3%
Colombia	38	-9.5%	2.7%
Argentina	32	-44.8%	-5.9%
Ecuador	26	-18.8%	0.0%



Produced by the Cartographic Research Lab
University of Alabama

Middle East

Enrollment of international students at the University of Illinois at Urbana-Champaign whose Country of Citizenship is in the Middle East



	2003	2004	2005	2006	2007	2008
MIDDLE EAST	255	265	266	263	251	254
Bahrain	0	0	0	0	1	2
Cyprus	11	10	8	6	5	5
Iran	34	48	55	67	72	92
Iraq	0	0	0	0	0	1
Israel	13	13	14	16	13	11
Jordan	8	8	6	10	12	14
Kuwait	3	1	2	2	1	1
Lebanon	16	15	15	14	15	13
Oman	1	1	1	1	1	1
Palestinian Authority	2	2	2	3	4	5
Qatar	0	0	0	0	0	0
Saudi Arabia	16	12	13	8	6	4
Syria	2	3	2	3	2	1
Turkey	149	151	147	132	118	103
United Arab Emirates	0	1	1	1	1	1
Yemen	0	0	0	0	0	0
MIDDLE EAST TOTAL	255	265	266	263	251	254

Fall 2008

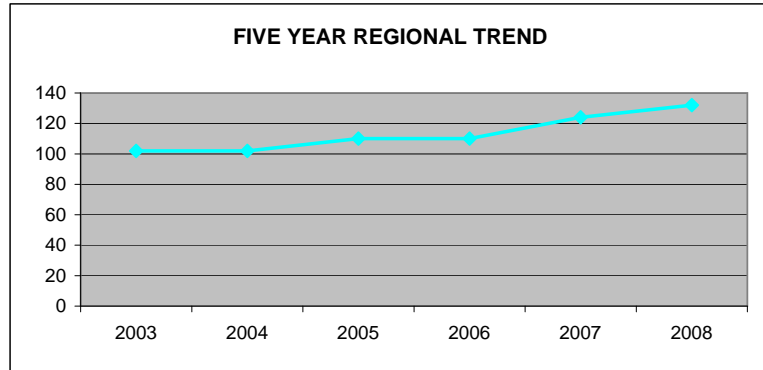
Top 5 Middle Eastern Countries	Total	% Change Over 6 Years	% Change from last year
Turkey	103	-30.9%	-12.7%
Iran	92	170.6%	27.8%
Lebanon	13	-18.8%	-13.3%
Israel	11	-15.4%	-15.4%
Jordan	14	75.0%	16.7%



Produced by the Cartographic Research Lab
University of Alabama

North America

Enrollment of international students at the University of Illinois at Urbana-Champaign whose Country of Citizenship is in North America



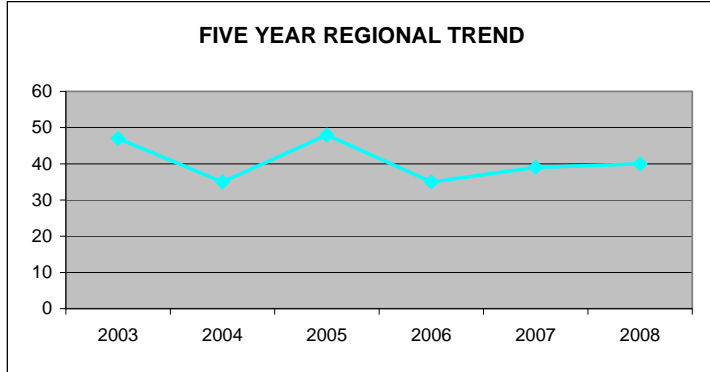
	2003	2004	2005	2006	2007	2008
NORTH AMERICA	102	102	110	110	124	132
Canada	102	102	110	110	124	132
NORTH AMERICA TOTAL	102	102	110	110	124	132



Produced by the Cartographic Research Lab
University of Alabama

Oceania

Enrollment of international students at the University of Illinois at Urbana-Champaign whose Country of Citizenship is in Oceania



	2003	2004	2005	2006	2007	2008
OCEANIA	47	35	48	35	39	40
Australia	33	20	36	25	33	31
Fiji	0	1	0	0	0	0
New Zealand	14	14	12	10	6	9
OCEANIA TOTAL	47	35	48	35	39	40

Fall 2008

International Student Enrollment by Department, Educational Level, and Class

	Undergraduate			Graduate					Grand Total	% UIUC International Enrolled
	Degree	Nondegree	Total	Masters	Doctorate	Professional	Non-degree	Total		
Agricultural, Consumer and Environmental Sciences	54	6	60	59	132	0	0	191	251	4.33%
Ag & Consumer Econ	25	0	25	9	35	0	0	44	69	1.19%
Ag & Biol Engineering	0	0	0	0	1	0	0	1	1	0.02%
Animal Sciences	5	0	5	14	29	0	0	43	48	0.83%
Crop Sciences	0	0	0	10	15	0	0	25	25	0.43%
Food Sci/Hum Nutr	20	0	20	16	22	0	0	38	58	1.00%
Hum & Com Dev	3	0	3	1	7	0	0	8	11	0.19%
Nat Res/Env Sci	1	0	1	5	15	0	0	20	21	0.36%
Nutritional Sciences	0	0	0	4	8	0	0	12	12	0.21%
Exchange	0	6	6	0	0	0	0	0	6	0.10%
Applied Health Sciences	16	0	16	8	40	0	0	48	64	1.10%
Community Health	0	0	0	0	0	0	0	0	0	0.00%
Kinesiology	8	0	8	3	17	0	0	20	28	0.48%
Rec/Sport/Tourism	8	0	8	4	14	0	0	18	26	0.45%
Sp & Hearing Sci	0	0	0	1	9	0	0	10	10	0.17%
Exchange	0	0	0	0	0	0	0	0	0	0.00%
Institute of Aviation	0	0	0	8	0	0	0	8	8	0.14%
Business	240	38	278	350	60	0	0	410	688	11.87%
Accountancy	89	3	92	119	15	0	0	134	226	3.90%
Bus Administration	17	0	17	49	31	0	0	80	97	1.67%
Finance	46	0	46	88	14	0	0	102	148	2.55%
MBA Program	0	0	0	94	0	0	0	94	94	1.62%
Undeclared	88	0	88	0	0	0	0	0	88	1.52%
Exchange	0	35	35	0	0	0	0	0	35	0.60%
Media	27	1	28	16	18	0	0	34	62	1.07%
Advertising	16	0	16	12	0	0	0	12	28	0.48%
Communications	0	0	0	0	0	0	0	0	0	0.00%
Institute of Communications Research	6	0	6	0	18	0	0	18	24	0.41%
Journalism	1	0	1	4	0	0	0	4	5	0.09%
Undeclared	4	0	4	0	0	0	0	0	4	0.07%
Exchange	0	1	1	0	0	0	0	0	1	0.02%

Fall 2008
International Student Enrollment by Department, Educational Level, and Class

	Undergraduate			Graduate					Grand Total	% UIUC International Enrolled
	Degree	Nondegree	Total	Masters	Doctorate	Professional	Non-degree	Total		
Education	6	0	6	17	156	0	0	173	179	3.09%
Curr & Instruction	3	0	3	6	63	0	0	69	72	1.24%
Educ Org & Ldrshp	0	0	0	0	2	0	0	2	2	0.03%
Educ Policy Studies	0	0	0	2	20	0	0	22	22	0.38%
Educ Psychology	0	0	0	0	41	0	0	41	41	0.71%
Human Res Educ	0	0	0	8	24	0	0	32	32	0.55%
Special Education	0	0	0	1	6	0	0	7	7	0.12%
Undeclared	3	0	3	0	0	0	0	0	3	0.05%
Exchange	0	0	0	0	0	0	0	0	0	0.00%
Engineering	660	112	772	299	1033	0	1	1333	2105	36.33%
Aero/Astro Eng	33	0	33	19	20	0	0	39	72	1.24%
Bioengineering	6	0	6	1	16	0	0	17	23	0.40%
Civil/Environ Eng	54	0	54	62	156	0	0	218	272	4.69%
Computer Science	111	0	111	27	221	0	0	248	359	6.20%
Electrical & Computer Eng	282	0	282	97	179	0	0	276	558	9.63%
Engineering Administration	2	0	2	12	22	0	0	34	36	0.62%
Industrial & Enterprise Systems Eng	56	0	56	10	40	0	0	50	106	1.83%
MATSE	31	0	31	5	79	0	0	84	115	1.98%
Mechanical Science & Eng	75	0	75	61	114	0	0	175	250	4.31%
Physics	7	0	7	2	152	0	0	154	161	2.78%
Plasma/Radiological Eng	3	0	3	3	34	0	0	37	40	0.69%
Exchange	0	112	112	0	0	0	1	1	113	1.95%
Fine and Applied Arts	100	16	116	91	146	0	5	242	358	6.18%
Architecture	38	0	38	28	11	0	0	39	77	1.33%
Art and Design	41	0	41	18	9	0	0	27	68	1.17%
Dance	2	0	2	1	0	0	0	1	3	0.05%
Landscape Arch	6	0	6	9	5	0	0	14	20	0.35%
Music	8	0	8	20	109	0	0	129	137	2.36%
Theatre	1	0	1	4	1	0	0	5	6	0.10%
Urban/Regional Plan	4	0	4	11	11	0	0	22	26	0.45%
Undeclared	0	0	0	0	0	0	0	0	0	0.00%
Exchange	0	16	16	0	0	0	5	5	21	0.36%

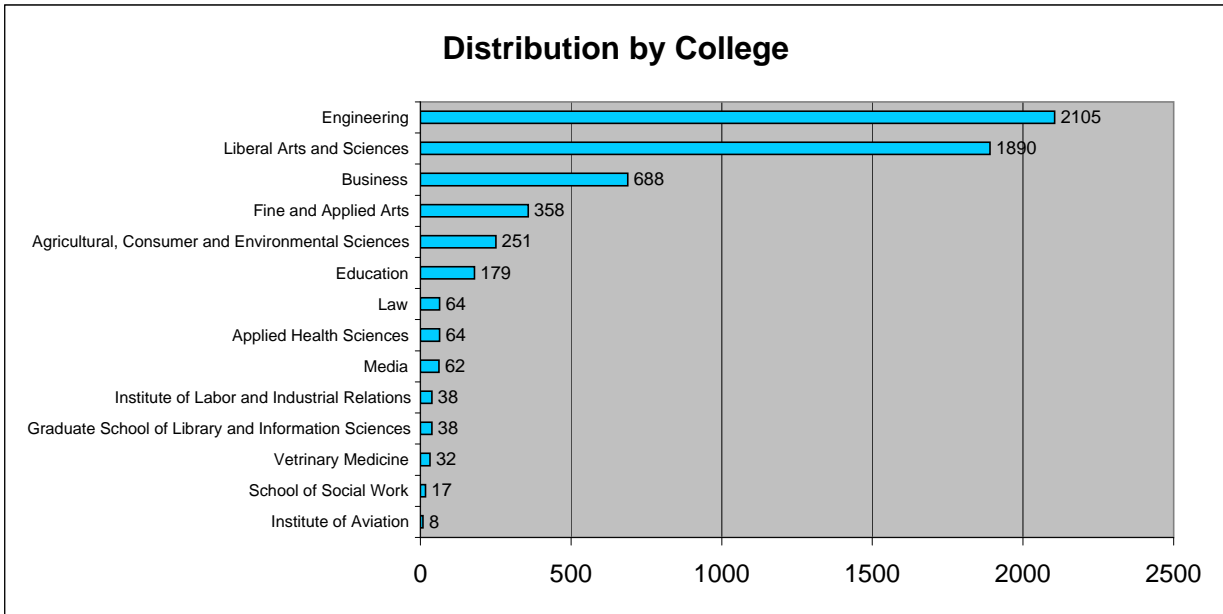
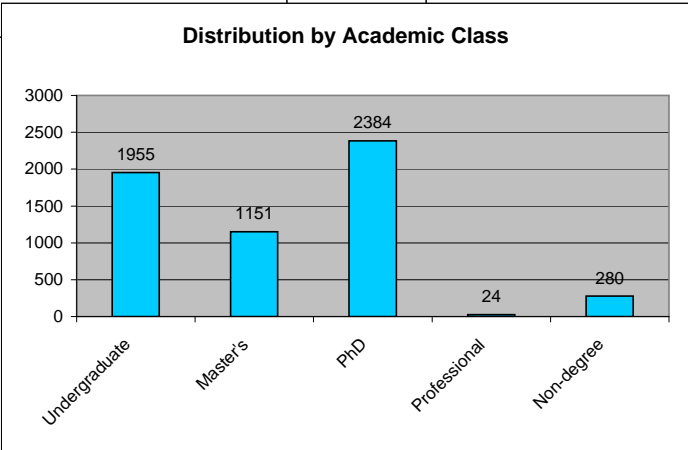
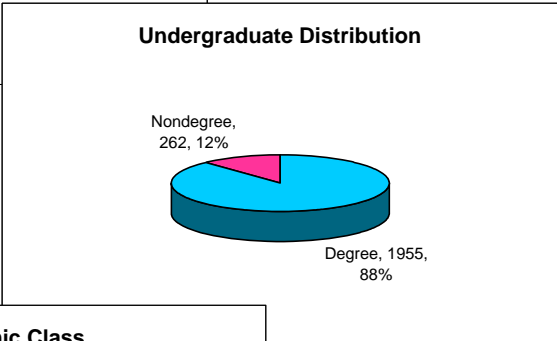
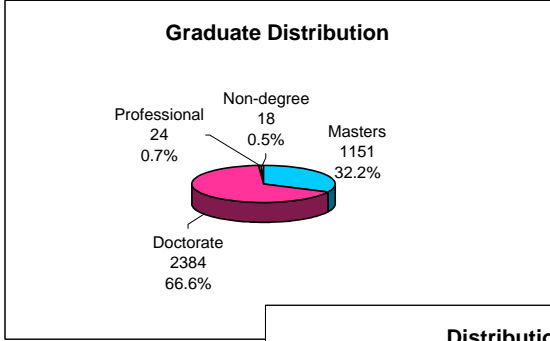
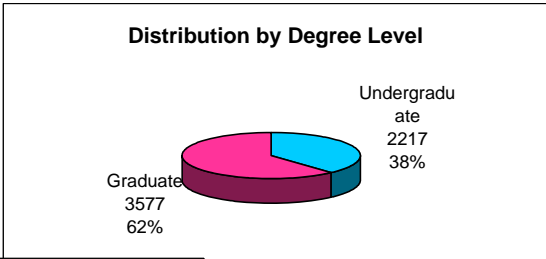
Fall 2008

International Student Enrollment by Department, Educational Level, and Class

	Undergraduate			Graduate					Grand Total	% UIUC International Enrolled
	Degree	Nondegree	Total	Masters	Doctorate	Professional	Non-degree	Total		
Institute of Labor and Industrial Relations	0	0	0	30	8	0	0	38	38	0.00%
Law	0	0	0	35	6	22	1	64	64	1.10%
Graduate	0	0	0	35	6	0	0	41	41	0.71%
Professional	0	0	0	0	0	22	0	22	22	0.38%
Exchanges	0	0	0	0	0	0	1	1	1	0.02%
Liberal Arts and Sciences	852	89	941	201	739	0	9	949	1890	32.62%
African Studies	0	0	0	1	0	0	0	1	1	0.02%
Anthropology	2	0	2	0	17	0	0	17	19	0.33%
Astronomy	1	0	1	0	21	0	0	21	22	0.38%
Atmospheric Sci	1	0	1	1	16	0	0	17	18	0.31%
Biochemistry	15	0	15	1	28	0	0	29	44	0.76%
Biological Sciences Program	0	0	0	0	0	0	0	0	0	0.00%
Cell and Developmental Biology	0	0	0	0	27	0	0	27	27	0.47%
Chem & Biomolecular Eng	50	0	50	4	41	0	0	45	95	1.64%
Chemistry	37	0	37	1	64	0	0	65	102	1.76%
Classics	0	0	0	2	0	0	0	2	2	0.03%
Communication	8	0	8	0	1	0	0	1	9	0.16%
Comparative Lit	0	0	0	2	12	0	0	14	14	0.24%
Division of General Studies	193	0	193	0	0	0	0	0	193	3.33%
E Asian Langs	2	0	2	8	19	0	0	27	29	0.50%
Earth, Society, Environment	2	0	2	0	0	0	0	0	2	0.03%
Economics	122	0	122	86	59	0	0	145	267	4.61%
English	3	0	3	1	13	0	0	14	17	0.29%
Eng/International Lang	0	0	0	31	0	0	0	31	31	0.54%
Entomology	0	0	0	0	7	0	0	7	7	0.12%
French	0	0	0	1	6	0	0	7	7	0.12%
Geography	2	0	2	1	12	0	0	13	15	0.26%
Geology	1	0	1	1	13	0	0	14	15	0.26%
Germanic Langs	0	0	0	1	2	0	1	4	4	0.07%
History	3	0	3	0	20	0	0	20	23	0.40%
Integrative Biology	6	0	6	1	13	0	0	14	20	0.35%

Fall 2008
International Student Enrollment by Department, Educational Level, and Class

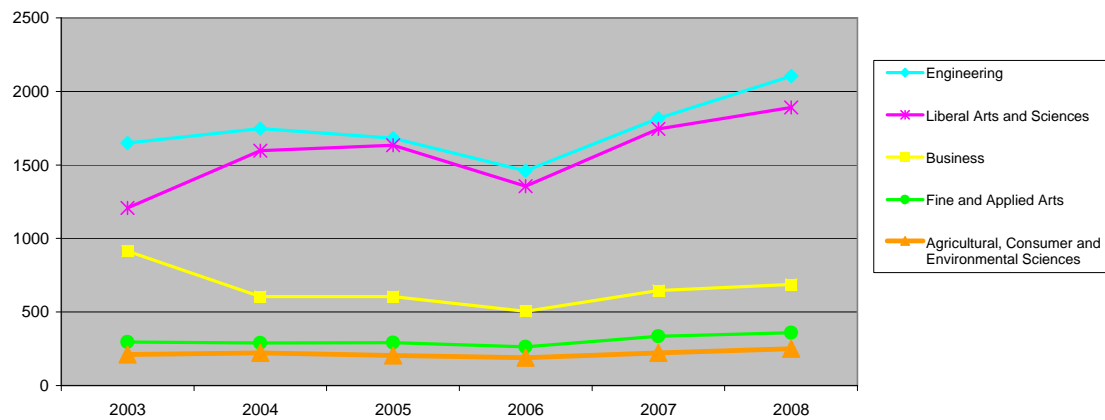
	Undergraduate			Graduate					Grand Total	% UIUC International Enrolled
	Degree	Nondegree	Total	Masters	Doctorate	Professional	Non-degree	Total		
LAS Admin	119	0	119	0	0	0	0	0	119	2.05%
Life Sciences	28	0	28	0	0	0	0	0	28	0.48%
Linguistics	3	0	3	2	26	0	0	28	31	0.54%
Mathematics	111	0	111	25	75	0	1	101	212	3.66%
Microbiology	0	0	0	0	27	0	0	27	27	0.47%
Molecular & Cellular Biology	42	0	42	0	77	0	0	77	119	2.05%
Molecular & Integrative Physiology	0	0	0	0	14	0	0	14	14	0.24%
Philosophy	1	0	1	0	3	0	0	3	4	0.07%
Plant Biology	0	0	0	2	0	0	0	2	2	0.03%
Political Science	24	0	24	1	13	0	0	14	38	0.66%
Psychology	46	0	46	0	54	0	0	54	100	1.73%
Religious Studies	0	0	0	0	0	0	0	0	0	0.00%
Russian and Eastern European Studies	0	0	0	0	0	0	0	0	0	0.00%
Slavic Langs	0	0	0	1	2	0	0	3	3	0.05%
Sociology	16	0	16	0	16	0	0	16	32	0.55%
Spanish/Italian/Port	1	0	1	11	20	0	0	31	32	0.55%
Statistics	13	0	13	16	21	0	0	37	50	0.86%
Exchange	0	89	89	0	0	0	7	7	96	1.66%
Graduate School of Library and Information Sciences	0	0	0	25	11	0	2	38	38	0.66%
School of Social Work	0	0	0	1	16	0	0	17	17	0.29%
Veterinary Medicine	0	0	0	11	19	2	0	32	32	0.55%
Professional	0	0	0	0	0	2	0	2	2	0.03%
Vet Biosciences	0	0	0	1	9	0	0	10	10	0.17%
Vet Clinical Med	0	0	0	9	5	0	0	14	14	0.24%
Vet Med Science	0	0	0	0	1	0	0	1	1	0.02%
Vet Pathobiology	0	0	0	1	4	0	0	5	5	0.09%
GRAND TOTALS	1955	262	2217	1151	2384	24	18	3577	5794	



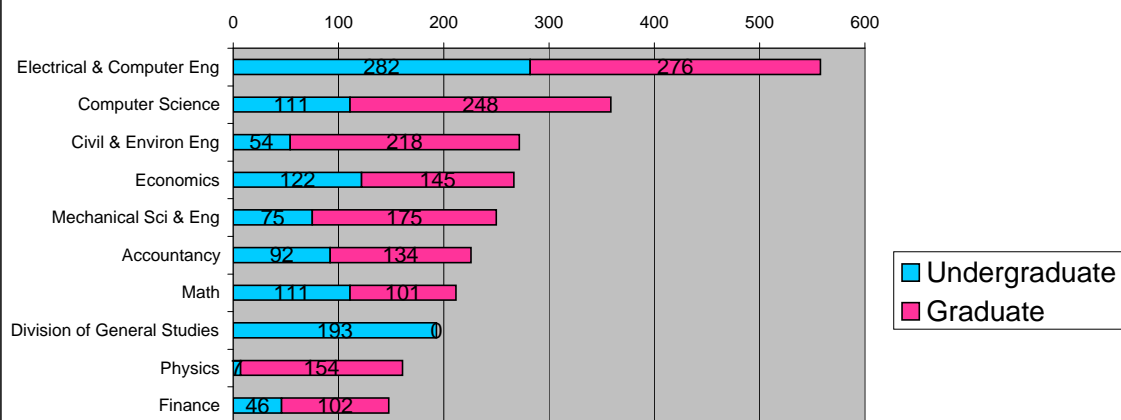
College Enrollment Trends 2003-2008

College	2003	2004	2005	2006	2007	2008	%Change Over Six Years	%Change from Last Year
Agricultural, Consumer and Environmental Sciences	211	223	205	190	221	251	19.0%	13.6%
Applied Health Sciences	57	61	61	52	67	64	12.3%	-4.5%
Institute of Aviation	2	4	2	3	6	8	300.0%	33.3%
Business	913	604	605	505	646	688	-24.6%	6.5%
Media	46	42	40	32	55	62	34.8%	12.7%
Education	220	236	227	196	201	179	-18.6%	-10.9%
Engineering	1649	1748	1681	1459	1817	2105	27.7%	15.9%
Fine and Applied Arts	295	290	292	264	336	358	21.4%	6.5%
Institute of Labor and Industrial Relations	22	26	24	36	42	38	72.7%	-9.5%
Law	44	49	55	56	71	64	45.5%	-9.9%
Liberal Arts and Sciences	1207	1597	1634	1355	1746	1890	56.6%	8.2%
Graduate School of Library and Information Sciences	46	38	35	40	33	38	-17.4%	15.2%
School of Social Work	16	10	10	12	17	17	6.3%	0.0%
Veterinary Medicine	41	35	33	31	30	32	-22.0%	6.7%
Total	4769	4963	4904	4231	5288	5794	21.5%	9.6%

Top 5 College Trends 2003-2008



Top Ten Departments*

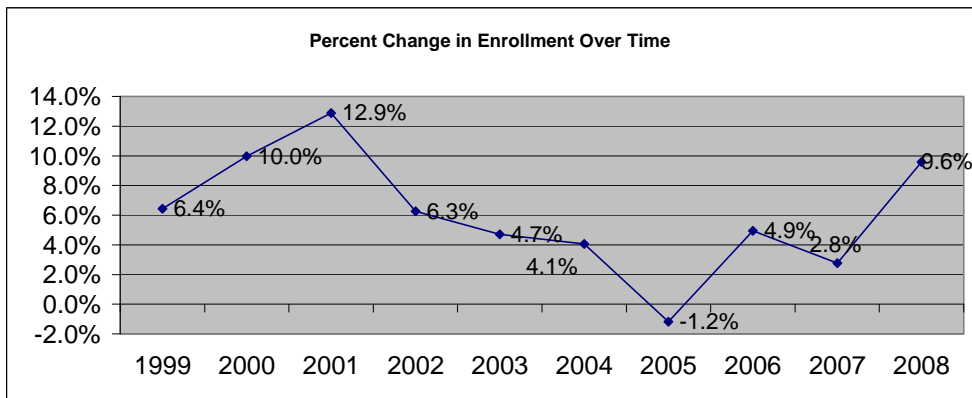
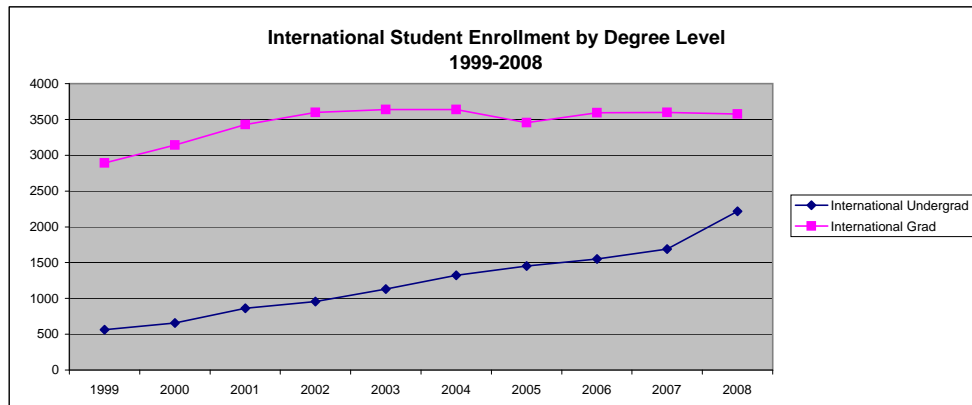
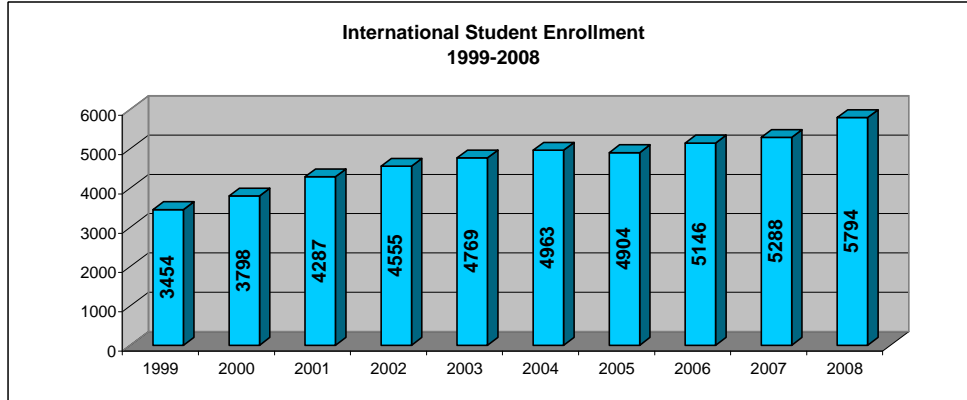


* Non-Degree Exchange students not included

International Student Enrollment by Degree Level (1999-2008)*

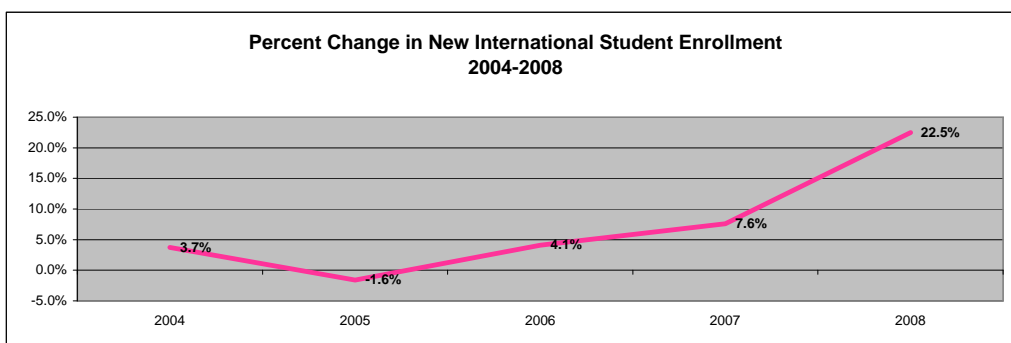
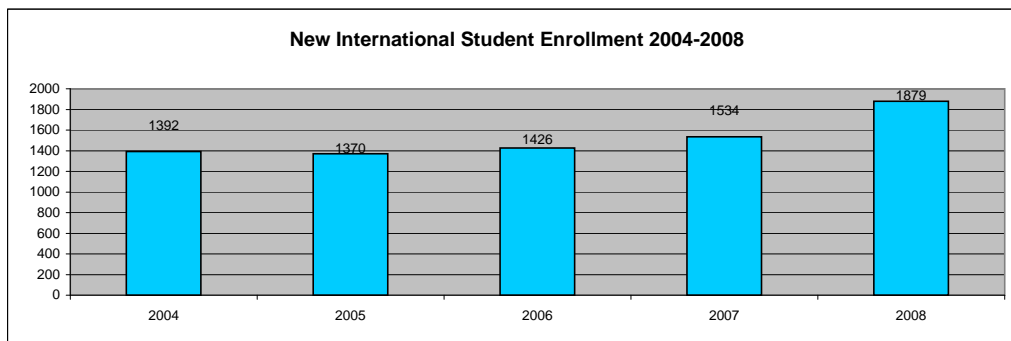
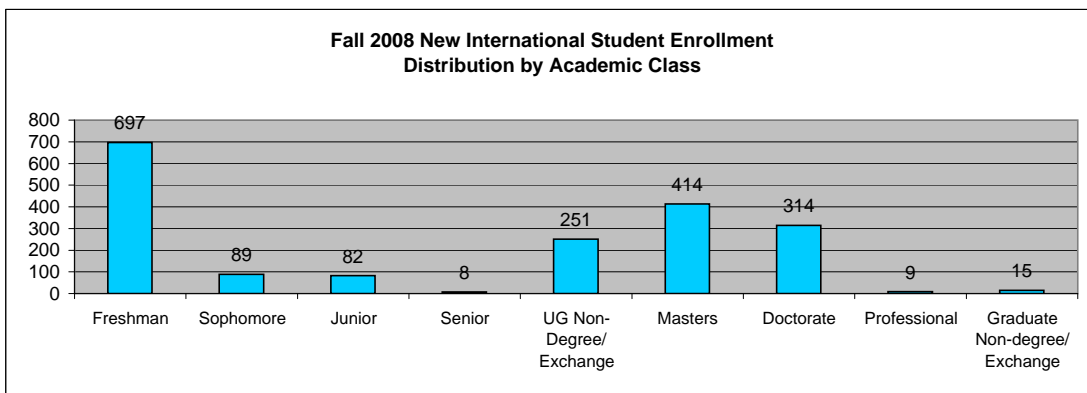
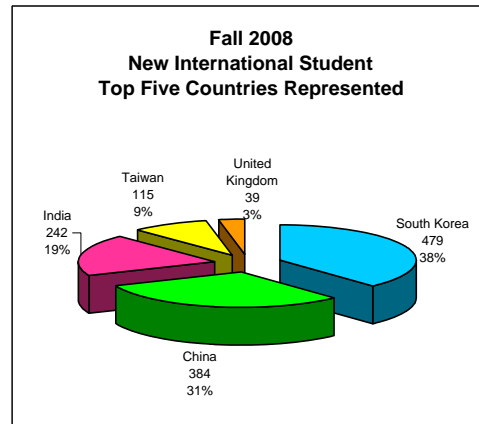
	1999	2000	2001	2002	2003	2004	2005	2006	2007	2008
International Undergrad	562	656	861	956	1132	1324	1451	1551	1690	2217
UIUC Undergrad	27855	27882	28114	28243	28575	29288	30453	30935	30695	31173
% Int UG of UIUC	2.0%	2.4%	3.1%	3.4%	4.0%	4.5%	4.8%	5.0%	5.5%	7.1%
International Grad	2892	3142	3426	3599	3637	3639	3453	3595	3598	3577
UIUC Grad	8835	9054	9570	10020	10281	10312	10217	10407	10440	10322
% Int Grad of UIUC	32.7%	34.7%	35.8%	35.9%	35.4%	35.3%	33.8%	34.5%	34.5%	34.7%
Total International	3454	3798	4287	4555	4769	4963	4904	5146	5288	5794
Total UIUC	36690	36936	37684	38263	38856	39600	40670	41342	41135	41495
% International of UIUC	9.4%	10.3%	11.4%	11.9%	12.3%	12.5%	12.1%	12.4%	12.9%	14.0%

* UIUC totals gathered from 10 day student enrollment statistics produced by the Division of Management Information. Professional students included in graduate student counts.



Fall 2008 New International Student Enrollment by College

College	Undergraduate	UG Exchange	Graduate	Grad Nondegree	Totals	
Engineering		326	108	231	1	666
LAS		375	87	193	7	662
Business		81	34	97	0	212
FAA		43	16	65	5	129
ACES		28	5	34	0	67
Law		0	0	45	1	46
Media		15	1	9	0	25
AHS		5	0	13	0	18
Education		3	0	12	0	15
Inst. of LIR		0	0	12	0	12
LIS		0	0	10	1	11
Vet Med		0	0	8	0	8
Sch. of Soc Work		0	0	4	0	4
Inst. of Aviation		0	0	4	0	4
Totals		876	251	737	15	1879



**International Faculty and Staff by World Region
2007 - 2008***

	J-1		H-1B		Other		Total
	Female	Male	Female	Male	Female	Male	
AFRICA	7	13	0	12	0	2	34
<i>EASTERN AFRICA</i>	0	3	0	4	0	0	7
Burundi	0	0	0	0	0	0	0
Eritrea	0	0	0	0	0	0	0
Ethiopia	0	1	0	2	0	0	3
Kenya	0	0	0	2	0	0	2
Madagascar	0	0	0	0	0	0	0
Malawi	0	0	0	0	0	0	0
Mauritius	0	0	0	0	0	0	0
Rwanda	0	1	0	0	0	0	1
Somalia	0	0	0	0	0	0	0
Tanzania	0	1	0	0	0	0	1
Uganda	0	0	0	0	0	0	0
Zambia	0	0	0	0	0	0	0
<i>CENTRAL AFRICA</i>	0	0	0	0	0	0	0
Angola	0	0	0	0	0	0	0
Cameroon	0	0	0	0	0	0	0
Congo	0	0	0	0	0	0	0
Sao Tome & Prindipe	0	0	0	0	0	0	0
<i>NORTH AFRICA</i>	5	4	0	6	0	2	17
Algeria	0	1	0	0	0	0	1
Egypt	4	3	0	6	0	2	15
Morocco	1	0	0	0	0	0	1
Sudan	0	0	0	0	0	0	0
Tunisia	0	0	0	0	0	0	0
<i>SOUTHERN AFRICA</i>	1	3	0	0	0	0	4
Botswana	0	0	0	0	0	0	0
South Africa	1	3	0	0	0	0	4
Zimbabwe	0	0	0	0	0	0	0
<i>WESTERN AFRICA</i>	1	3	0	2	0	0	6
Benin	0	0	0	0	0	0	0
Burkina Faso	0	0	0	0	0	0	0
Cote d'Ivoire	0	0	0	0	0	0	0
Gambia, The	0	0	0	0	0	0	0
Ghana	0	1	0	0	0	0	1
Liberia	0	0	0	0	0	0	0
Mali	0	0	0	1	0	0	1
Niger	0	0	0	0	0	0	0
Nigeria	1	2	0	1	0	0	4
Senegal	0	0	0	0	0	0	0
Sierra Leone	0	0	0	0	0	0	0

*These are total numbers for 2007-2008. Actual length of stay may range from a few weeks to several years.

**International Faculty and Staff by World Region
2007 - 2008***

	J-1		H-1B		Other		Total
	Female	Male	Female	Male	Female	Male	
ASIA	174	405	83	267	9	27	965
EAST ASIA	153	348	43	161	4	16	725
China (PRC)	98	148	32	110	2	6	396
Hong Kong	0	3	0	1	0	0	4
Japan	5	42	1	4	0	1	53
Korea, Republic of	37	136	7	39	1	8	228
Macau	0	0	0	0	0	0	0
Mongolia	0	0	0	0	0	0	0
Taiwan (ROC)	13	19	3	7	1	1	44
SOUTH AND CENTRAL ASIA	15	50	39	97	4	9	214
Afghanistan	0	0	0	0	0	0	0
Bangladesh	0	2	0	2	0	0	4
India	12	41	37	83	3	7	183
Kazakhstan	1	0	0	0	0	0	1
Kyrgyzstan	0	0	0	0	0	0	0
Maldives	0	0	0	0	0	0	0
Nepal	0	0	0	2	0	0	2
Pakistan	0	5	1	10	1	1	18
Sri Lanka	1	1	1	0	0	0	3
Uzbekistan	1	1	0	0	0	1	3
SOUTHEAST ASIA	6	7	1	9	1	2	26
Brunei	0	0	0	0	0	0	0
Cambodia	0	0	0	0	0	0	0
Indonesia	0	0	0	3	1	1	5
Laos	0	0	0	0	0	0	0
Malaysia	0	1	0	1	0	1	3
Myanmar (Burma)	0	0	0	1	0	0	1
Philippines	0	0	0	1	0	0	1
Singapore	0	0	1	2	0	0	3
Thailand	3	0	0	1	0	0	4
Vietnam	3	6	0	0	0	0	9

*These are total numbers for 2007-2008. Actual length of stay may range from a few weeks to several years.

**International Faculty and Staff by World Region
2007 - 2008***

	J-1		H-1B		Other		Total
	Female	Male	Female	Male	Female	Male	
EUROPE	75	140	18	44	2	14	293
<i>EASTERN EUROPE</i>	17	24	7	21	1	9	79
Albania	0	1	0	0	0	0	1
Armenia	0	0	0	1	0	0	1
Azerbaijan	0	0	0	0	0	0	0
Belarus	0	0	1	0	0	1	2
Bosnia and Herzengovina	0	0	0	0	0	0	0
Bulgaria	1	1	0	0	0	0	2
Croatia	0	1	0	0	0	0	1
Czech Republic	1	3	1	0	0	1	6
Estonia	0	0	0	0	0	0	0
Georgia	1	0	0	0	0	0	1
Hungary	0	0	0	1	1	0	2
Latvia	3	1	0	0	0	0	4
Lithuania	0	0	0	0	0	0	0
Moldova	0	0	0	0	0	0	0
Montenegro	0	0	0	0	0	0	0
Poland	2	3	0	2	0	0	7
Romania	0	2	3	4	0	1	10
Russia	9	8	1	6	0	6	30
Serbia	0	3	1	2	0	0	6
Slovakia	0	0	0	1	0	0	1
Ukraine	0	1	0	4	0	0	5
<i>WESTERN EUROPE</i>	58	116	11	23	1	5	214
Austria	3	2	1	0	0	0	6
Belgium	1	6	0	0	0	0	7
Denmark	2	3	1	1	0	0	7
Finland	0	0	0	0	0	0	0
France	7	23	1	5	0	1	37
Germany	11	31	3	5	0	1	51
Greece	1	6	1	1	0	1	10
Iceland	0	1	0	0	0	0	1
Ireland	0	1	0	0	0	0	1
Italy	12	13	1	3	0	0	29
Netherlands	1	3	1	2	0	0	7
Norway	0	1	1	0	0	0	2
Portugal	0	0	0	1	0	1	2
Spain	12	11	0	3	1	0	27
Sweden	1	2	0	0	0	1	4
Switzerland	0	0	0	0	0	0	0
United Kingdom	7	13	1	2	0	0	23

*These are total numbers for 2007-2008. Actual length of stay may range from a few weeks to several years.

**International Faculty and Staff by World Region
2007 - 2008***

	J-1		H-1B		Other		Total
	Female	Male	Female	Male	Female	Male	
LATIN AMERICA	50	59	5	15	0	3	132
CARIBBEAN	1	1	0	1	0	0	3
Bahamas	0	0	0	0	0	0	0
Barbados	0	0	0	0	0	0	0
Cayman Islands	0	0	0	0	0	0	0
Cuba	0	1	0	1	0	0	2
Dominican Republic	1	0	0	0	0	0	1
Haiti	0	0	0	0	0	0	0
Jamaica	0	0	0	0	0	0	0
St. Vincent	0	0	0	0	0	0	0
Trinidad & Tobago	0	0	0	0	0	0	0
CENTRAL AMERICA AND MEXICO	26	14	1	0	0	1	42
Belize	0	0	0	0	0	0	0
Costa Rica	1	1	0	0	0	0	2
El Salvador	0	0	0	0	0	0	0
Guatemala	0	1	0	0	0	1	2
Honduras	5	5	1	0	0	0	11
Mexico	19	7	0	0	0	0	26
Nicaragua	0	0	0	0	0	0	0
Panama	1	0	0	0	0	0	1
SOUTH AMERICA	23	44	4	14	0	2	87
Argentina	2	5	0	2	0	0	9
Bolivia	1	1	0	0	0	0	2
Brazil	15	26	2	5	0	1	49
Chile	1	1		1	0	0	3
Colombia	0	7	1	2	0	0	10
Ecuador	2	1	0	0	0	0	3
Guyana	0	0	0	0	0	0	0
Paraguay	0	0	0	0	0	0	0
Peru	1	2	0	2	0	1	6
Suriname	0	0	0	0	0	0	0
Uruguay	0	0	0	0	0	0	0
Venezuela	1	1	1	2	0	0	5

*These are total numbers for 2007-2008. Actual length of stay may range from a few weeks to several years.

**International Faculty and Staff by World Region
2007 - 2008***

	J-1		H-1B		Other		Total
	Female	Male	Female	Male	Female	Male	
MIDDLE EAST	8	27	3	13	0	5	56
Bahrain	0	0	0	0	0	0	0
Cyprus	0	0	1	0	0	1	2
Iran	0	4	0	3	0	3	10
Iraq	0	0	0	0	0	0	0
Israel	3	5	1	3	0	0	12
Jordan	0	1	0	0	0	0	1
Kuwait	0	0	0	0	0	0	0
Lebanon	0	1	1	0	0	0	2
Oman	0	0	0	0	0	0	0
Palestinian Authority	0	0	0	0	0	0	0
Qatar	0	0	0	0	0	0	0
Saudi Arabia	0	0	0	0	0	0	0
Syria	0	1	0	1	0	0	2
Turkey	5	15	0	6	0	1	27
United Arab Emirates	0	0	0	0	0	0	0
Yemen	0	0	0	0	0	0	0
NORTH AMERICA	7	8	10	12	5	9	51
Canada	7	8	10	12	5	9	51
OCEANIA	1	2	0	5	0	2	10
Australia	0	1	0	4	0	1	6
Fiji	0	0	0	0	0	0	0
New Zealand	1	1	0	1	0	1	4
TOTALS	322	654	119	368	16	62	1541

*These are total numbers for 2007-2008. Actual length of stay may range from a few weeks to several years.

UIUC International Faculty and Staff by Field of Specialization

Field of Specialization	Total	% of Total
Agriculture	98	6.36%
Architecture and Environmental Design	11	0.71%
Area and Ethnic Studies	12	0.78%
Communications	18	1.17%
Computer and Information Sciences	140	9.09%
Education	47	3.05%
Engineering	399	25.89%
Foreign Languages and Literature	10	0.65%
Family and Consumer Sciences	18	1.17%
Law and Legal Studies	27	1.75%
Letters	22	1.43%
Library Sciences	50	3.24%
Biological and Biomedical Sciences	199	12.91%
Mathematics	35	2.27%
Philosophy and Religion	5	0.32%
Physical Sciences	197	12.78%
Psychology	25	1.62%
Public Administration and Social Service	11	0.71%
Social Sciences	60	3.89%
Visual and Performing Arts	11	0.71%
Health Sciences	79	5.13%
Business and Management	54	3.50%
History	5	0.32%
Other	8	0.52%
Total	1541	

