



International Student & Scholar Services

Fall 2007

International Student Enrollment Statistics

Julie Misa
Director

www.ips.uiuc.edu/iss

Contents

Summary	2
International Student Enrollment <u>by Country</u>	3
Associated tables and charts	8
Regional Trends:	
Africa	11
Asia	13
Europe	15
Latin America	17
Middle East	19
North America	21
Oceania	23
International Student Enrollment <u>by Curricula</u>	24
Associated tables and charts	28
Enrollment trends	30
New international student data	33

Summary

For the Fall 2007 semester, UIUC welcomed 1534 new international students to campus, a 7.6 percent increase from the number of new students who arrived in Fall 2006. The total number of enrolled international students rose by 2.8 percent from the previous year for a total of 5288.

These students represent 123 countries from around the globe, with the top five countries of South Korea (25%), China (18%), India (12%), Taiwan (8%), and Canada (2%). Broken down by educational level, the increase in enrollment of international students was greater for undergraduates (9.0%) than for graduate students (0.1%).

Seventy-six percent of all international students come from Asia, with 71 percent of those coming from countries in East Asia. However, of all the world regions, North America saw the greatest percentage jump in enrollment for 2007, increasing by 12.7 percent from last year with the additional 14 students coming from that area of the world.

A majority of the international students are coming to UIUC in order to study in the field of Engineering. Approximately 34 percent are studying within the College of Engineering and of all the departments on campus, Electrical and Computer Engineering (471; 8.9%) is the most popular. The other top ranking departments in terms of international student enrollment include Computer Science (332; 6.3%), Economics (262; 5.0%), Civil Engineering (223; 4.2%), and Mechanical Science and Engineering (220; 4.2%).

Sixty-eight percent of international students are studying at the Graduate level, composing approximately 35% of all UIUC graduate students. Undergraduates account for 5.5 percent of the total UIUC undergraduate population (approximately 14% of these are non-degree exchange students), making the total percentage for all international students at UIUC 12.8 percent.

Fall 2007

International Student Enrollment by Country, Educational Level, and Gender

	Degree		Undergraduates				Total	Graduates				Total	Grand Total		
	Female	Male	Exchange		Total	PhD		Professional		Non-Degree	Total				
			Female	Male		Female		Male	Female					Male	Female
AFRICA	1	11	1	0	13	7	15	16	36	2	1	0	0	77	90
EASTERN AFRICA	0	0	0	0	0	1	5	5	14	1	0	0	0	26	26
Burundi	0	0	0	0	0	0	0	0	0	0	0	0	0	0	0
Eritrea	0	0	0	0	0	0	0	0	1	0	0	0	0	1	1
Ethiopia	0	0	0	0	0	0	0	1	3	0	0	0	0	4	4
Kenya	0	0	0	0	0	0	3	3	6	1	0	0	0	13	13
Madagascar	0	0	0	0	0	0	0	0	0	0	0	0	0	0	0
Malawi	0	0	0	0	0	0	0	0	0	0	0	0	0	0	0
Mauritius	0	0	0	0	0	0	0	0	1	0	0	0	0	1	1
Somalia	0	0	0	0	0	0	0	0	0	0	0	0	0	0	0
Tanzania	0	0	0	0	0	0	0	1	3	0	0	0	0	4	4
Uganda	0	0	0	0	0	0	1	0	0	0	0	0	0	1	1
Zambia	0	0	0	0	0	1	1	0	0	0	0	0	0	2	2
CENTRAL AFRICA	0	1	0	0	1	0	0	0	1	0	0	0	0	1	2
Angola	0	0	0	0	0	0	0	0	0	0	0	0	0	0	0
Cameroon	0	1	0	0	1	0	0	0	1	0	0	0	0	1	2
Congo	0	0	0	0	0	0	0	0	0	0	0	0	0	0	0
Sao Tome & Príncipe	0	0	0	0	0	0	0	0	0	0	0	0	0	0	0
NORTH AFRICA	0	3	0	0	3	0	5	2	10	0	0	0	0	17	20
Algeria	0	0	0	0	0	0	0	0	0	0	0	0	0	0	0
Egypt	0	3	0	0	3	0	4	1	9	0	0	0	0	14	17
Morocco	0	0	0	0	0	0	0	1	1	0	0	0	0	2	2
Sudan	0	0	0	0	0	0	1	0	0	0	0	0	0	1	1
Tunisia	0	0	0	0	0	0	0	0	0	0	0	0	0	0	0
SOUTHERN AFRICA	0	3	1	0	4	1	1	3	3	0	0	0	0	8	12
Botswana	0	1	0	0	1	0	0	0	0	0	0	0	0	0	1
South Africa	0	2	1	0	3	0	1	3	3	0	0	0	0	7	10
Zimbabwe	0	0	0	0	0	1	0	0	0	0	0	0	0	1	1
WESTERN AFRICA	1	4	0	0	5	5	4	6	8	1	1	0	0	25	30
Benin	0	0	0	0	0	0	0	0	0	0	0	0	0	0	0
Burkina Faso	0	0	0	0	0	0	0	1	0	0	0	0	0	1	1
Cote d'Ivoire	0	0	0	0	0	1	1	0	2	0	0	0	0	4	4
Gambia, The	0	0	0	0	0	0	0	0	0	0	0	0	0	0	0
Ghana	0	0	0	0	0	0	1	3	3	0	1	0	0	8	8
Liberia	0	0	0	0	0	0	0	0	0	0	0	0	0	0	0
Mali	0	1	0	0	1	0	0	0	0	0	0	0	0	0	1
Niger	0	0	0	0	0	0	0	0	1	0	0	0	0	1	1
Nigeria	1	3	0	0	4	3	2	0	1	1	0	0	0	7	11
Senegal	0	0	0	0	0	1	0	1	0	0	0	0	0	2	2
Sierra Leone	0	0	0	0	0	0	0	1	1	0	0	0	0	2	2

Fall 2007

International Student Enrollment by Country, Educational Level, and Gender

	Degree		Undergraduates		Total	Master's		PhD		Graduates		Non-Degree		Total	Grand Total		
	Female	Male	Female	Male		Female	Male	Female	Male	Female	Male	Female	Male			Female	Male
ASIA	484	824	31	45	1384	438	434	731	1046	9	1	3	2	2664	4048		
EAST ASIA	337	534	22	40	933	334	271	606	713	8	1	1	0	1934	2867		
China (PRC)	42	45	4	5	96	138	74	266	370	5	0	1	0	854	950		
Hong Kong	20	19	0	2	41	5	6	14	14	0	0	0	0	27	68		
Japan	7	11	3	9	30	7	15	23	16	0	0	0	0	61	91		
Korea, Republic of	228	415	14	9	666	77	115	223	225	2	0	0	0	642	1308		
Macao	2	1	0	0	3	1	0	2	0	0	0	0	0	3	6		
Mongolia	0	1	0	0	1	0	0	2	0	0	0	0	0	2	3		
Taiwan (ROC)	38	42	1	15	96	106	65	84	88	1	1	0	0	345	441		
SOUTH AND CENTRAL ASIA	57	176	0	1	234	57	116	89	247	0	0	0	1	510	744		
Bangladesh	0	0	0	0	0	1	2	7	16	0	0	0	0	26	26		
India	52	163	0	1	216	47	95	75	211	0	0	0	1	429	645		
Kazakhstan	2	3	0	0	5	3	4	2	1	0	0	0	0	10	15		
Kyrgyzstan	0	1	0	0	1	0	0	0	0	0	0	0	0	0	1		
Maldives	0	0	0	0	0	1	0	0	0	0	0	0	0	1	1		
Nepal	0	0	0	0	0	0	1	1	2	0	0	0	0	4	4		
Pakistan	2	9	0	0	11	3	11	2	15	0	0	0	0	31	42		
Sri Lanka	1	0	0	0	1	2	2	2	1	0	0	0	0	7	8		
Uzbekistan	0	0	0	0	0	0	1	0	1	0	0	0	0	2	2		
SOUTHEAST ASIA	90	114	9	4	217	47	47	36	86	1	0	2	1	220	437		
Brunei	2	0	0	0	2	0	0	0	0	0	0	0	0	0	2		
Cambodia	0	0	0	0	0	0	0	0	0	0	0	0	0	0	0		
Indonesia	26	30	0	0	56	10	11	2	5	0	0	0	0	28	84		
Laos	0	0	0	0	0	0	1	0	0	0	0	0	0	1	1		
Malaysia	33	41	1	0	75	1	8	6	6	0	0	0	0	21	96		
Myanmar (Burma)	0	3	0	0	3	0	0	0	1	0	0	0	0	1	4		
Philippines	4	2	0	0	6	2	1	6	6	0	0	0	0	15	21		
Singapore	15	30	7	4	56	4	6	9	18	1	0	2	1	41	97		
Thailand	8	7	1	0	16	25	15	9	17	0	0	0	0	66	82		
Vietnam	2	1	0	0	3	5	5	4	33	0	0	0	0	47	50		

Fall 2007

International Student Enrollment by Country, Educational Level, and Gender

	Degree		Undergraduates				Total	Graduates				Total	Grand Total		
	Female	Male	Exchange		PhD	Professional		Non-Degree							
			Female	Male		Female		Male	Female	Male					
EUROPE	14	14	41	83	152	30	36	100	108	0	1	4	6	285	437
EASTERN EUROPE	4	4	1	2	11	10	4	43	44	0	1	0	0	102	113
Albania	0	0	0	0	0	0	0	2	0	0	0	0	0	2	2
Armenia	0	0	0	0	0	0	0	1	1	0	0	0	0	2	2
Azerbaijan	0	1	0	0	1	0	0	0	0	0	0	0	0	0	1
Belarus	0	0	0	0	0	0	0	1	0	0	0	0	0	1	1
Bulgaria	0	0	0	0	0	1	0	1	5	0	0	0	0	7	7
Croatia	0	0	1	0	1	0	0	0	1	0	0	0	0	1	2
Czech Republic	0	1	0	0	1	0	0	3	1	0	0	0	0	4	5
Estonia	0	0	0	0	0	0	0	0	1	0	0	0	0	1	1
Georgia	0	0	0	0	0	0	0	0	0	0	0	0	0	0	0
Hungary	0	0	0	0	0	0	0	1	0	0	0	0	0	1	1
Latvia	0	0	0	0	0	0	0	0	0	0	0	0	0	0	0
Lithuania	0	0	0	0	0	1	0	0	0	0	0	0	0	1	1
Moldova	0	0	0	0	0	0	1	0	0	0	0	0	0	1	1
Montenegro	0	0	0	0	0	1	0	0	0	0	0	0	0	1	1
Poland	0	1	0	1	2	0	0	6	1	0	0	0	0	7	9
Romania	0	0	0	0	0	3	0	13	11	0	0	0	0	27	27
Russia	3	0	0	0	3	2	1	3	10	0	1	0	0	17	20
Serbia	0	0	0	0	0	2	1	5	7	0	0	0	0	15	15
Slovakia	0	0	0	1	1	0	0	1	0	0	0	0	0	1	2
Ukraine	1	1	0	0	2	0	1	6	6	0	0	0	0	13	15
WESTERN EUROPE	10	10	40	81	141	20	32	57	64	0	0	4	6	183	324
Austria	1	0	10	12	23	0	0	3	3	0	0	0	0	6	29
Belgium	0	0	0	4	4	1	1	1	1	0	0	0	0	4	8
Denmark	0	0	2	4	6	0	0	1	1	0	0	0	0	2	8
Finland	0	0	0	0	0	0	0	2	0	0	0	0	0	2	2
France	0	0	6	13	19	7	9	5	4	0	0	1	3	29	48
Germany	1	0	3	17	21	2	5	5	13	0	0	3	2	30	51
Greece	1	0	0	1	2	1	4	6	14	0	0	0	0	25	27
Iceland	0	0	0	0	0	3	0	0	0	0	0	0	0	3	3
Ireland	0	0	0	0	0	0	0	0	3	0	0	0	0	3	3
Italy	0	1	0	4	5	1	6	4	7	0	0	0	0	18	23
Netherlands	0	0	0	4	4	0	0	2	2	0	0	0	0	4	8
Norway	0	0	0	0	0	0	0	0	1	0	0	0	0	1	1
Portugal	0	2	0	0	2	1	0	4	0	0	0	0	0	5	7
Spain	1	0	2	1	4	4	5	15	11	0	0	0	1	36	40
Sweden	1	1	2	4	8	0	0	3	0	0	0	0	0	3	11
Switzerland	0	0	1	0	1	0	1	0	0	0	0	0	0	1	2
United Kingdom	5	6	14	17	42	0	1	6	4	0	0	0	0	11	53

Fall 2007

International Student Enrollment by Country, Educational Level, and Gender

	Degree		Undergraduates				Total	Master's				PhD				Graduates				Total	Grand Total	
	Female	Male	Exchange		Total	Female		Male	Female	Male	Female	Male	Female	Male	Female	Male	Female	Male	Non-Degree Female			Non-Degree Male
			Female	Male																		
LATIN AMERICA	10	14	2	16	42	28	48	57	122	2	0	0	0	257	299							
CARIBBEAN	2	0	0	0	2	6	7	5	3	1	0	0	0	22	24							
Bahamas	0	0	0	0	0	0	1	1	0	0	0	0	0	2	2							
Barbados	0	0	0	0	0	0	1	0	0	0	0	0	0	1	1							
Cayman Islands	0	0	0	0	0	1	0	0	0	0	0	0	0	1	1							
Dominican Republic	0	0	0	0	0	2	2	0	1	0	0	0	0	5	5							
Haiti	0	0	0	0	0	0	0	1	1	0	0	0	0	2	2							
Jamaica	2	0	0	0	2	1	2	2	1	0	0	0	0	6	8							
St. Vincent	0	0	0	0	0	0	0	0	0	0	0	0	0	0	0							
Trinidad & Tobago	0	0	0	0	0	2	1	1	0	1	0	0	0	5	5							
CENTRAL AMERICA AND MEXICO	2	6	0	2	10	3	15	15	21	0	0	0	0	54	64							
Belize	0	1	0	0	1	0	0	2	0	0	0	0	0	2	3							
Costa Rica	0	0	0	0	0	0	0	2	1	0	0	0	0	3	3							
El Salvador	0	0	0	0	0	0	0	0	2	0	0	0	0	2	2							
Guatemala	0	2	0	0	2	0	2	0	1	0	0	0	0	3	5							
Honduras	0	0	0	0	0	2	3	0	0	0	0	0	0	5	5							
Mexico	2	3	0	2	7	1	10	10	16	0	0	0	0	37	44							
Nicaragua	0	0	0	0	0	0	0	0	0	0	0	0	0	0	0							
Panama	0	0	0	0	0	0	0	1	1	0	0	0	0	2	2							
SOUTH AMERICA	6	8	2	14	30	19	26	37	98	1	0	0	0	181	211							
Argentina	1	3	1	1	6	1	1	7	19	0	0	0	0	28	34							
Bolivia	0	0	0	0	0	0	2	3	1	0	0	0	0	6	6							
Brazil	0	2	1	5	8	4	5	15	28	0	0	0	0	52	60							
Chile	0	0	0	2	2	0	0	0	12	0	0	0	0	12	14							
Colombia	1	2	0	0	3	4	4	7	19	0	0	0	0	34	37							
Ecuador	0	0	0	6	6	2	8	2	8	0	0	0	0	20	26							
Guyana	0	0	0	0	0	1	0	1	0	0	0	0	0	2	2							
Paraguay	0	0	0	0	0	1	2	0	1	0	0	0	0	4	4							
Peru	3	1	0	0	4	4	2	1	7	0	0	0	0	14	18							
Suriname	0	0	0	0	0	0	0	0	0	0	0	0	0	0	0							
Uruguay	0	0	0	0	0	2	0	0	2	0	0	0	0	4	4							
Venezuela	1	0	0	0	1	0	2	1	1	1	0	0	0	5	6							

Fall 2007 International Student Enrollment by Country, Educational Level, and Gender

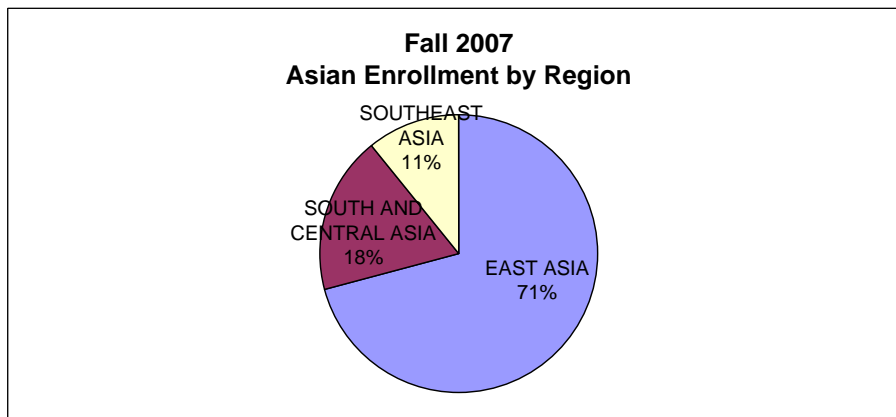
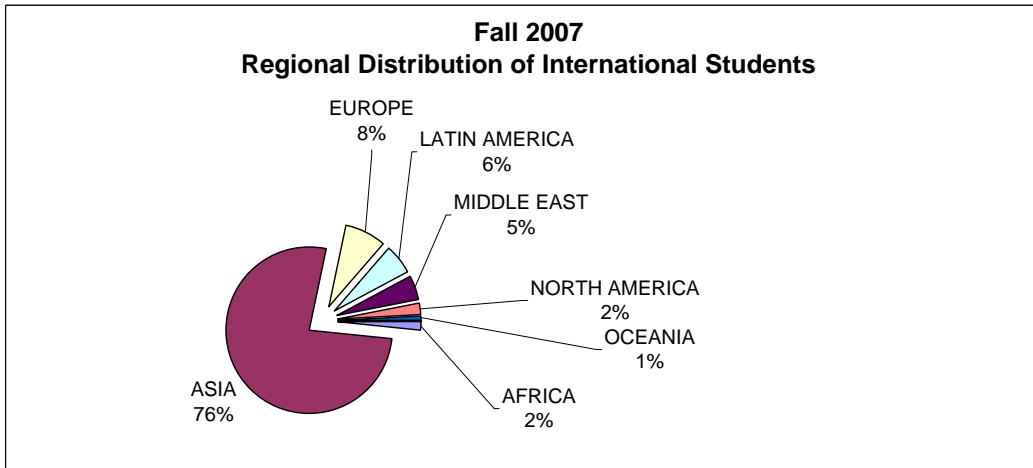
	Degree		Undergraduates				Graduates				Grand Total		
	Female	Male	Exchange		PhD	Professional		Non-Degree		Total	Total		
			Female	Male		Female	Male	Female	Male				
MIDDLE EAST	3	13	2	3	21	65	87	0	1	1	0	230	251
Bahrain	0	1	0	0	1	0	0	0	0	0	0	0	1
Cyprus	0	1	0	0	1	0	2	0	0	0	0	4	5
Iran	0	1	0	0	1	4	20	0	0	1	0	71	72
Iraq	0	0	0	0	0	0	0	0	0	0	0	0	0
Israel	2	1	0	0	3	1	4	0	0	0	0	10	13
Jordan	1	1	1	1	4	1	2	0	0	0	0	8	12
Kuwait	0	1	0	0	1	0	0	0	0	0	0	0	1
Lebanon	0	0	1	1	2	2	4	0	0	0	0	13	15
Oman	0	0	0	0	0	0	0	0	0	0	0	1	1
Palestinian Authority	0	1	0	0	1	0	2	0	0	0	0	3	4
Qatar	0	0	0	0	0	0	0	0	0	0	0	0	0
Saudi Arabia	0	2	0	0	2	2	1	0	0	0	0	4	6
Syria	0	0	0	0	0	0	1	0	0	0	0	2	2
Turkey	0	3	0	1	4	13	40	32	0	1	0	114	118
United Arab Emirates	0	1	0	0	1	0	0	0	0	0	0	0	1
NORTH AMERICA	21	29	0	0	50	3	8	20	38	2	3	74	124
Canada	21	29	0	0	50	3	8	20	38	2	3	74	124
OCEANIA	9	6	6	7	28	3	2	1	5	0	0	11	39
Australia	7	6	6	7	26	1	2	1	3	0	0	7	33
Fiji	0	0	0	0	0	0	0	0	0	0	0	0	0
New Zealand	2	0	0	0	2	2	0	0	2	0	0	4	6
TOTALS	542	911	83	154	1690	530	598	990	1442	15	7	3598	5288

Fall 2007 Regional Summary

	Undergraduates					Graduates								Grand Total
	Degree		Exchange		Total	Master's		PhD	Professional		Non-		Total	
	Female	Male	Female	Male		Female	Male	Female	Male	Female	Male			
AFRICA	1	11	1	0	13	7	15	16	2	1	0	0	77	90
ASIA	484	824	31	45	1384	438	434	731	9	1	3	2	2664	4048
EUROPE	14	14	41	83	152	30	36	100	0	1	4	6	285	437
LATIN AMERICA	10	14	2	16	42	28	48	57	2	0	0	0	257	299
MIDDLE EAST	3	13	2	3	21	21	55	65	0	1	1	0	230	251
NORTH AMERICA	21	29	0	0	50	3	8	20	2	3	0	0	74	124
OCEANIA	9	6	6	7	28	3	2	1	0	0	0	0	11	39
TOTAL ENROLLMENT	542	911	83	154	1690	530	598	990	15	7	8	8	3598	5288

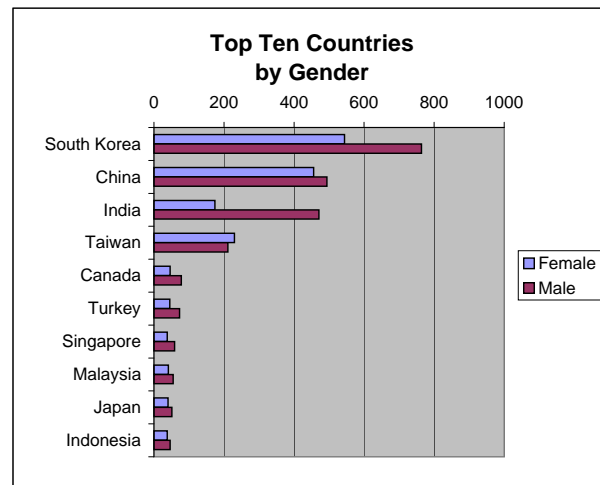
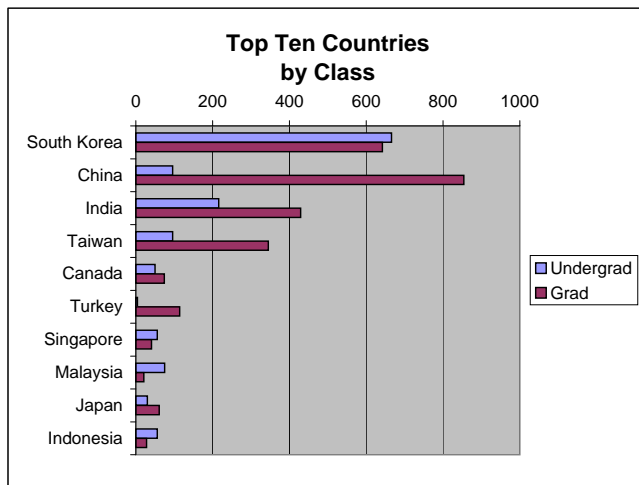
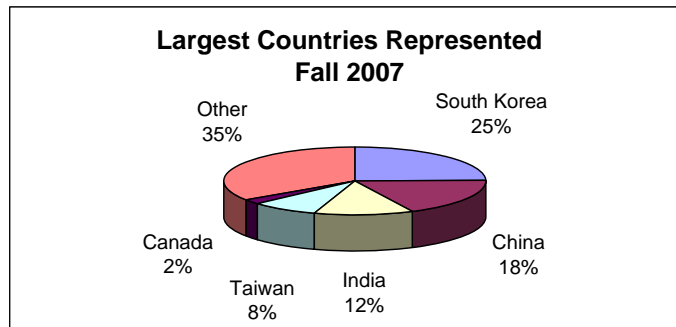
Regional Summary 2002-2007

	2002	2003	2004	2005	2006	2007	% Change Over Six % Change from Years last year	
Africa	118	116	103	84	93	90	-23.7%	-3.2%
Asia	3179	3391	3612	3639	3874	4048	27.3%	4.5%
Europe	525	518	500	455	462	437	-16.8%	-5.4%
Latin America	336	340	348	302	309	299	-11.0%	-3.2%
Middle East	250	255	265	266	263	251	0.4%	-4.6%
North America	100	102	102	110	110	124	24.0%	12.7%
Oceania	47	47	35	48	35	39	-17.0%	11.4%
Total	4555	4769	4965	4904	5146	5288	16.1%	2.8%

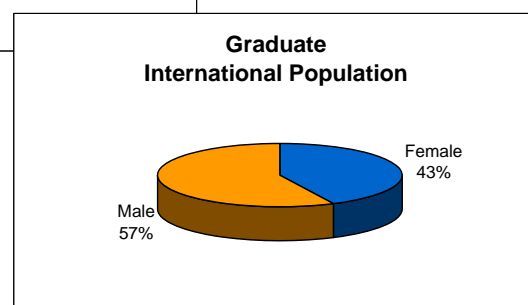
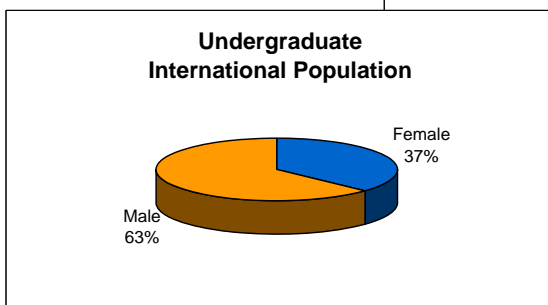
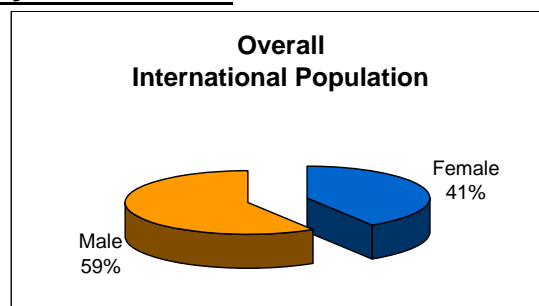


Fall 2007 Top Ten Countries

	Undergrad	Grad	Female	Male	Total
South Korea	666	642	544	764	1308
China	96	854	456	494	950
India	216	429	174	471	645
Taiwan	96	345	230	211	441
Canada	50	74	46	78	124
Turkey	4	114	45	73	118
Singapore	56	41	38	59	97
Malaysia	75	21	41	55	96
Japan	30	61	40	51	91
Indonesia	56	28	38	46	84



Fall 2007 Breakdown by Gender

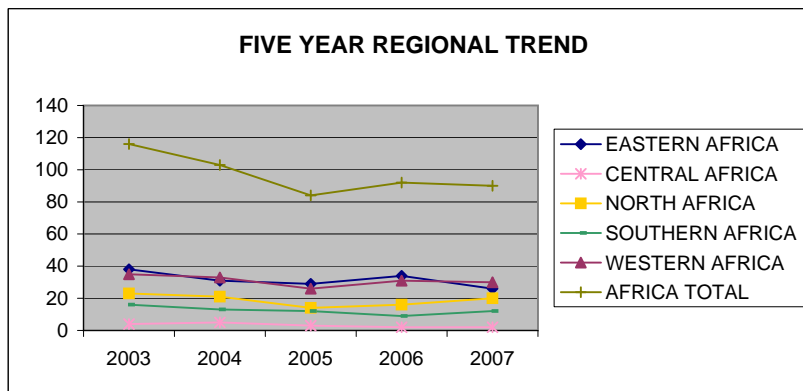




Produced by the Cartographic Research Lab
University of Alabama

Africa

Enrollment of international students at the University of Illinois at Urbana-Champaign whose Country of Citizenship is in Africa



	2003	2004	2005	2006	2007
EASTERN AFRICA	38	31	29	34	26
Burundi	1	1	1	1	0
Eritrea	0	0	0	0	1
Ethiopia	5	7	8	7	4
Kenya	21	16	13	18	13
Madagascar	0	0	1	1	0
Malawi	1	1	1	1	0
Mauritius	1	1	1	1	1
Somalia	1	1	1	0	0
Tanzania	6	3	3	3	4
Uganda	1	1	0	1	1
Zambia	1	0	0	1	2
CENTRAL AFRICA	4	5	3	2	2
Angola	1	1	0	0	0
Cameroon	3	3	2	2	2
Congo	0	1	1	0	0
Sao Tome & Prindipe	0	0	0	0	0
NORTH AFRICA	23	21	14	16	20
Algeria	1	1	0	0	0
Egypt	17	15	12	14	17
Morocco	4	3	2	2	2
Sudan	0	0	0	0	1
Tunisia	1	2	0	0	0
SOUTHERN AFRICA	16	13	12	9	12
Botswana	2	2	1	0	1
South Africa	14	11	11	9	10
Zimbabwe	0	0	0	1	1
WESTERN AFRICA	35	33	26	31	30
Benin	0	0	0	0	0
Burkina Faso	1	2	1	2	1
Cote d'Ivoire	3	3	2	2	4
Gambia, The	1	1	0	1	0
Ghana	12	8	9	8	8
Liberia	3	3	0	0	0
Mali	1	1	0	1	1
Niger	0	1	1	1	1
Nigeria	10	9	10	13	11
Senegal	3	3	1	1	2
Sierra Leone	1	2	2	2	2
AFRICA TOTAL	116	103	84	92	90

Fall 2007

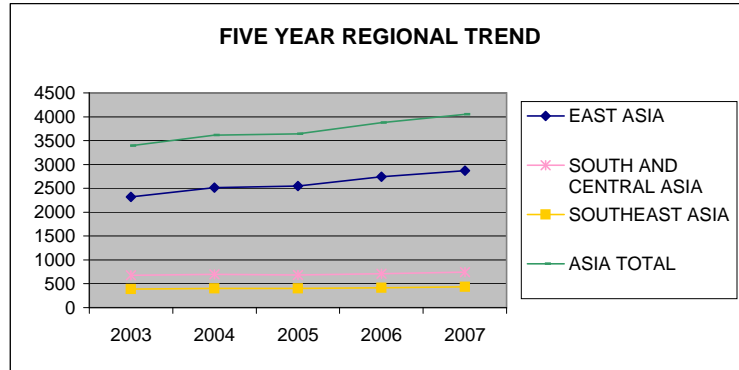
Top 5 African Countries	Total	% Change Over 5 Years	% Change from last year
Egypt	17	0.0%	21.4%
Kenya	13	-38.1%	-27.8%
Nigeria	11	10.0%	-15.4%
South Africa	10	-28.6%	11.1%
Ghana	8	-33.3%	0.0%



Produced by the Cartographic Research Lab
University of Alabama

Asia

Enrollment of international students at the University of Illinois at Urbana-Champaign whose Country of Citizenship is in Asia



	2003	2004	2005	2006	2007
EAST ASIA	2323	2514	2549	2744	2867
China (PRC)	881	883	873	931	950
Hong Kong	58	78	75	69	68
Japan	108	106	85	96	91
Korea, Republic of	952	1096	1149	1220	1308
Macau	5	7	6	7	6
Mongolia	2	2	3	3	3
Taiwan (ROC)	317	342	358	418	441
SOUTH AND CENTRAL ASIA	676	698	687	712	744
Bangladesh	12	15	13	19	26
India	608	624	621	624	645
Kazakhstan	3	3	3	18	15
Kyrgyzstan	1	0	1	1	1
Maldives	0	0	0	1	1
Nepal	6	8	6	5	4
Pakistan	34	34	32	32	42
Sri Lanka	9	10	8	9	8
Uzbekistan	3	4	3	3	2
SOUTHEAST ASIA	392	400	403	418	437
Brunei	0	0	0	0	2
Cambodia	0	1	2	1	0
Indonesia	71	68	68	69	84
Laos	1	1	0	0	1
Malaysia	97	98	95	99	96
Myanmar (Burma)	3	5	7	6	4
Philippines	13	13	14	24	21
Singapore	107	97	83	93	97
Thailand	88	72	73	71	82
Vietnam	12	45	61	55	50
ASIA TOTAL	3391	3612	3639	3874	4048

Fall 2007

Top 5 Asian Countries	Total	% Change Over 5 Years	% Change from last year
Korea, Republic of	1308	37.4%	7.2%
China (PRC)	950	7.8%	2.0%
India	645	6.1%	3.4%
Taiwan (ROC)	441	39.1%	5.5%
Singapore	97	-9.3%	4.3%

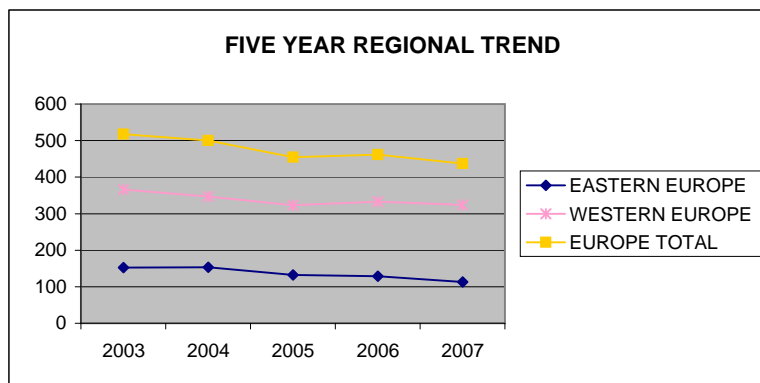


Produced by the Cartographic Research Lab
University of Alabama



Europe

Enrollment of international students at the University of Illinois at Urbana-Champaign whose Country of Citizenship is in Europe



	2003	2004	2005	2006	2007
EASTERN EUROPE	152	153	132	129	113
Albania	4	3	2	2	2
Armenia	3	2	3	3	2
Azerbaijan	1	2	0	1	1
Belarus	7	5	4	4	1
Bulgaria	14	10	9	5	7
Croatia	4	5	5	3	2
Czech Republic	2	6	6	5	5
Estonia	0	1	1	1	1
Georgia	5	3	1	1	0
Hungary	1	0	0	1	1
Latvia	0	0	1	2	0
Lithuania	5	3	3	3	1
Moldova	0	0	0	1	1
Poland	8	12	11	12	9
Romania	34	39	33	30	27
Russia	35	31	24	25	20
Serbia & Montenegro*	17	17	14	15	16
Slovakia	0	1	1	1	2
Ukraine	12	13	14	14	15
WESTERN EUROPE	366	347	323	333	324
Austria	35	24	33	33	29
Belgium	5	8	7	4	8
Denmark	7	6	5	9	8
Finland	4	3	2	2	2
France	54	47	41	53	48
Germany	67	64	61	52	51
Greece	28	29	23	25	27
Iceland	0	1	0	1	3
Ireland	8	8	7	3	3
Italy	15	16	13	13	23
Netherlands	11	10	4	9	8
Norway	1	4	3	1	1
Portugal	6	4	4	7	7
Spain	42	34	41	42	40
Sweden	6	6	11	14	11
Switzerland	4	3	2	2	2
United Kingdom	73	80	66	63	53
EUROPE TOTAL	518	500	455	462	437

Fall 2007

Top 5 European Countries	Total	% Change Over 5 Years	% Change from last year
United Kingdom	53	-27.4%	-15.9%
Germany	51	-23.9%	-1.9%
France	48	11.1%	-1.9%
Spain	40	-4.8%	-4.8%
Austria	29	-17.1%	-12.1%

* Serbia and Montenegro are now separate countries, however they are listed together here because historical data would not be available otherwise.



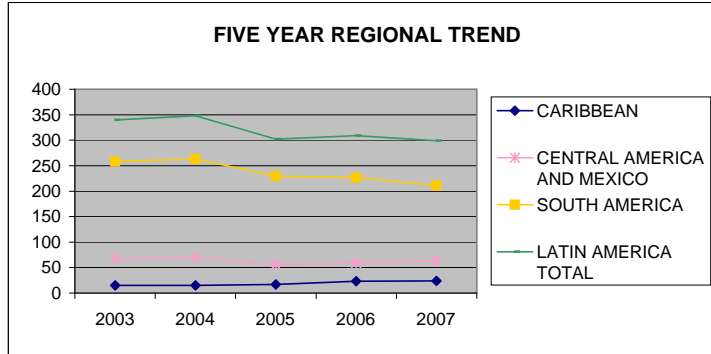
Produced by the Cartographic Research Lab
University of Alabama



Produced by the Cartographic Research Lab
University of Alabama

Latin America

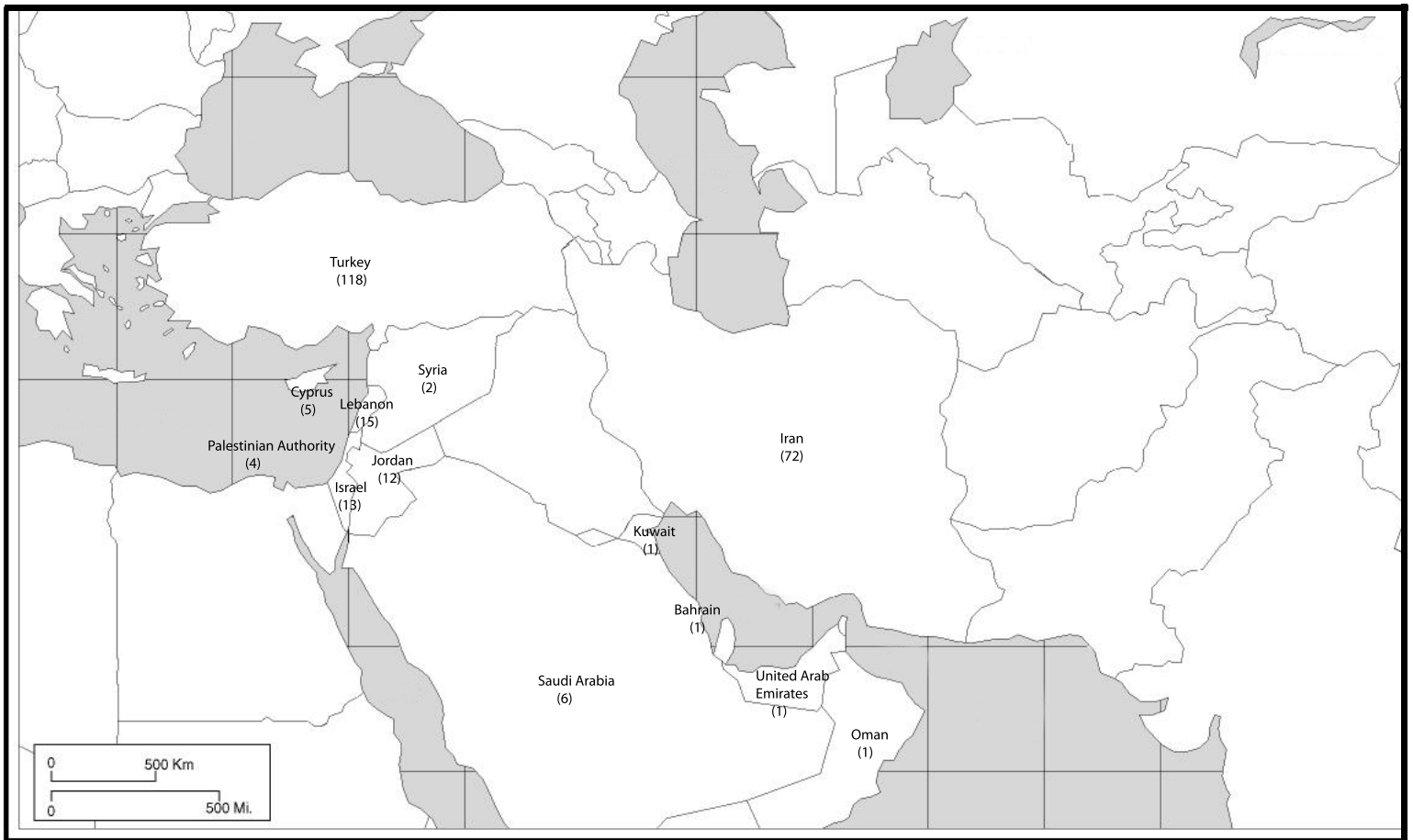
Enrollment of international students at the University of Illinois at Urbana-Champaign whose Country of Citizenship is in Latin America



	2003	2004	2005	2006	2007
CARIBBEAN	15	15	17	23	24
Bahamas	0	0	1	2	2
Barbados	1	1	1	0	1
Cayman Islands	0	0	0	0	1
Dominican Republic	3	1	3	7	5
Haiti	2	2	1	1	2
Jamaica	2	5	8	7	8
St. Vincent	0	1	1	0	0
Trinidad & Tobago	7	5	2	6	5
CENTRAL AMERICA AND MEXICO	67	70	56	59	64
Belize	3	4	5	5	3
Costa Rica	4	4	1	2	3
El Salvador	0	1	2	2	2
Guatemala	5	5	6	5	5
Honduras	6	6	5	5	5
Mexico	45	46	33	39	44
Nicaragua	0	1	2	0	0
Panama	4	3	2	1	2
SOUTH AMERICA	258	263	229	227	211
Argentina	58	64	52	45	34
Bolivia	6	6	5	6	6
Brazil	65	69	67	69	60
Chile	19	15	12	11	14
Colombia	42	45	31	39	37
Ecuador	32	30	24	21	26
Guyana	0	2	4	3	2
Paraguay	1	0	1	4	4
Peru	15	12	18	19	18
Suriname	0	0	0	0	0
Uruguay	6	6	5	4	4
Venezuela	14	14	10	6	6
LATIN AMERICA TOTAL	340	348	302	309	299

Fall 2007

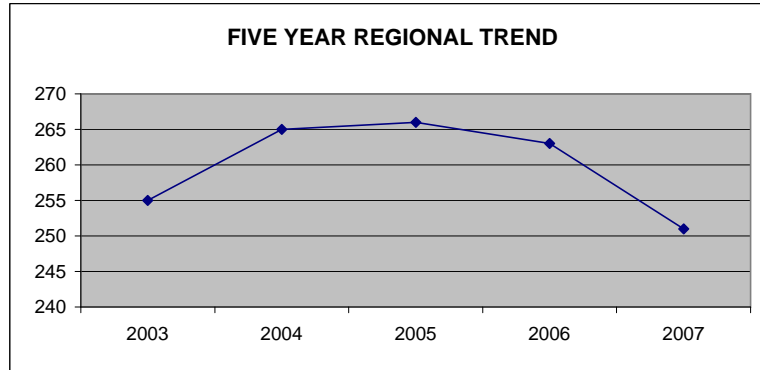
Top 5 Latin American Countries	Total	% Change Over 5 Years	% Change from last year
Brazil	60	-7.7%	-13.0%
Mexico	44	-2.2%	12.8%
Colombia	37	-11.9%	-5.1%
Argentina	34	-41.4%	-24.4%
Ecuador	26	-18.8%	23.8%



Produced by the Cartographic Research Lab
University of Alabama

Middle East

Enrollment of international students at the University of Illinois at Urbana-Champaign whose Country of Citizenship is in the Middle East



	2003	2004	2005	2006	2007
MIDDLE EAST	255	265	266	263	251
Bahrain	0	0	0	0	1
Cyprus	11	10	8	6	5
Iran	34	48	55	67	72
Iraq	0	0	0	0	0
Israel	13	13	14	16	13
Jordan	8	8	6	10	12
Kuwait	3	1	2	2	1
Lebanon	16	15	15	14	15
Oman	1	1	1	1	1
Palestinian Authority	2	2	2	3	4
Qatar	0	0	0	0	0
Saudi Arabia	16	12	13	8	6
Syria	2	3	2	3	2
Turkey	149	151	147	132	118
United Arab Emirates	0	1	1	1	1
MIDDLE EAST TOTAL	255	265	266	263	251

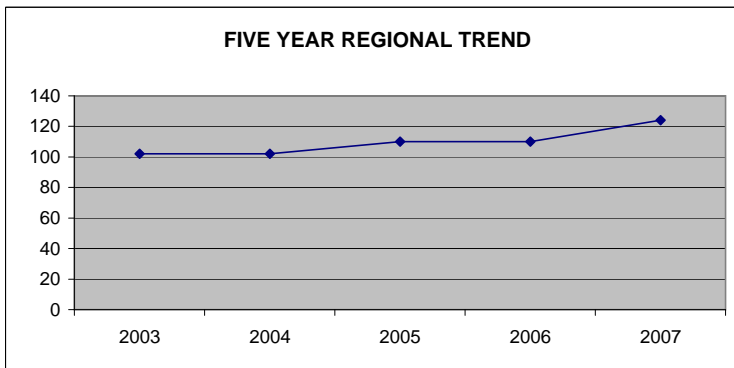
Fall 2007			
Top 5 Middle Eastern Countries	Total	% Change Over 5 Years	% Change from last year
Turkey	118	-20.8%	-10.6%
Iran	72	111.8%	7.5%
Lebanon	15	-6.3%	7.1%
Israel	13	0.0%	-18.8%
Jordan	12	50.0%	20.0%



Produced by the Cartographic Research Lab
University of Alabama

North America

Enrollment of international students at the University of Illinois at Urbana-Champaign whose Country of Citizenship is in North America



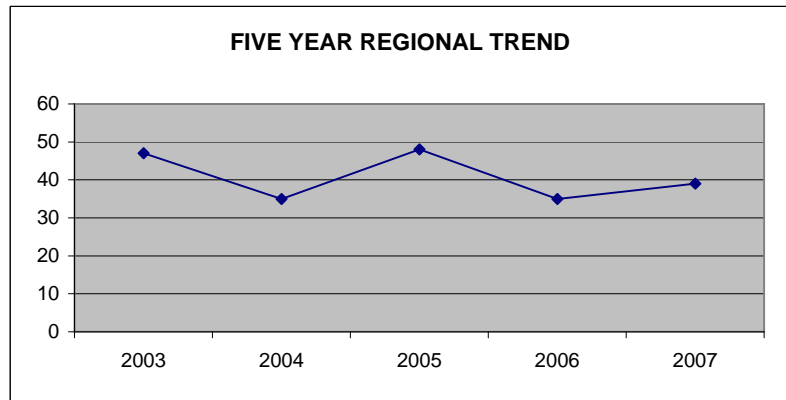
	2003	2004	2005	2006	2007
NORTH AMERICA	102	102	110	110	124
Canada	102	102	110	110	124
NORTH AMERICA TOTAL	102	102	110	110	124



Produced by the Cartographic Research Lab
University of Alabama

Oceania

Enrollment of international students at the University of Illinois at Urbana-Champaign whose Country of Citizenship is in Oceania



	2003	2004	2005	2006	2007
OCEANIA	47	35	48	35	39
Australia	33	20	36	25	33
Fiji	0	1	0	0	0
New Zealand	14	14	12	10	6
OCEANIA TOTAL	47	35	48	35	39

Fall 2007 International Student Enrollment by Department, Educational Level, and Class

	Undergraduate			Graduate				Grand Total	% UIUC International Enrolled
	Degree	Nondegree	Total	Masters	Doctorate	Professional	Non-degree		
Agricultural, Consumer and Environmental Sciences	38	9	47	47	127	0	0	174	4.18%
Ag & Consumer Econ	10	0	10	5	35	0	0	40	0.95%
Ag Engineering	1	0	1	0	0	0	0	0	0.02%
Animal Sciences	5	0	5	17	21	0	0	38	0.81%
Crop Sciences	0	0	0	8	16	0	0	24	0.45%
Food Sci./Hum Nutr	18	0	18	10	26	0	0	36	1.02%
Hum & Com Dev	3	0	3	0	5	0	0	5	0.15%
Nat Res/Env Sci	1	0	1	5	16	0	0	21	0.42%
Nutritional Sciences	0	0	0	2	8	0	0	10	0.19%
Exchange	0	9	9	0	0	0	0	0	0.17%
Applied Health Sciences	19	1	20	10	37	0	0	47	1.27%
Community Health	0	0	0	0	0	0	0	0	0.00%
Kinesiology	10	0	10	2	13	0	0	15	0.47%
Rec/Sport/Tourism	8	0	8	8	13	0	0	21	0.55%
Sp & Hearing Sci	1	0	1	0	11	0	0	11	0.23%
Exchange	0	1	1	0	0	0	0	0	0.02%
Institute of Aviation	1	0	1	5	0	0	0	5	0.11%
Business	213	26	239	347	60	0	0	407	12.22%
Accountancy	87	0	87	83	13	0	0	96	3.46%
Bus Administration	14	0	14	43	34	0	0	77	1.72%
Finance	45	0	45	109	13	0	0	122	3.16%
MBA Program	0	0	0	112	0	0	0	112	2.12%
Undeclared	67	0	67	0	0	0	0	0	1.27%
Exchange	0	26	26	0	0	0	0	0	0.49%
Communications	17	0	17	18	20	0	0	38	1.04%
Advertising	11	0	11	16	0	0	0	16	0.51%
Communications	4	0	4	0	20	0	0	20	0.45%
Journalism	0	0	0	2	0	0	0	2	0.04%
Undeclared	2	0	2	0	0	0	0	0	0.04%
Exchange	0	0	0	0	0	0	0	0	0.00%

Fall 2007 International Student Enrollment by Department, Educational Level, and Class

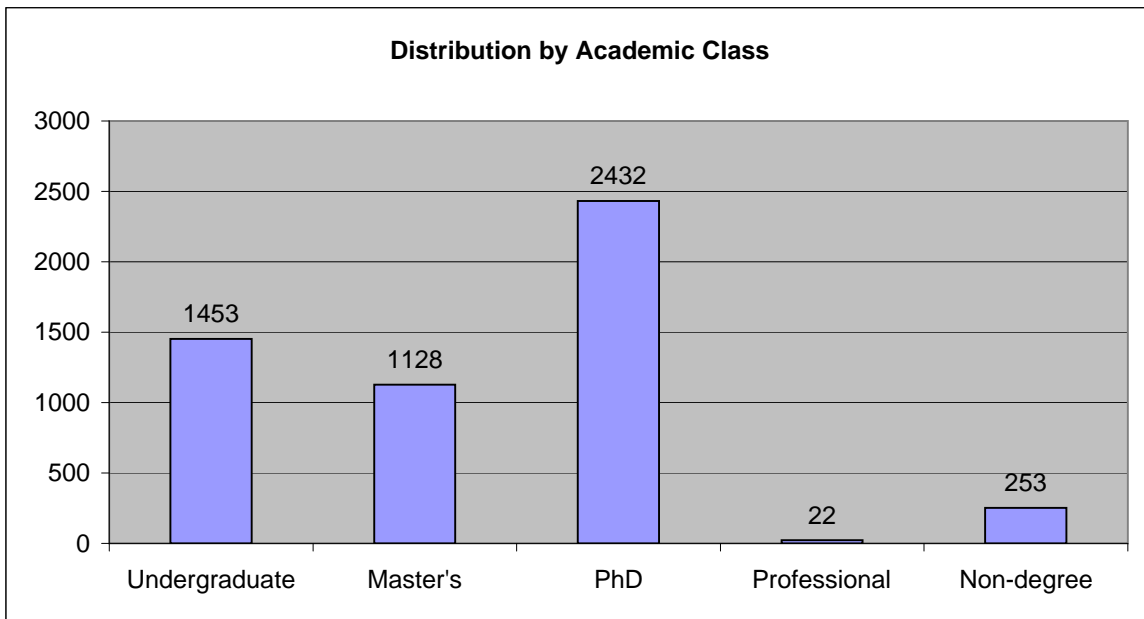
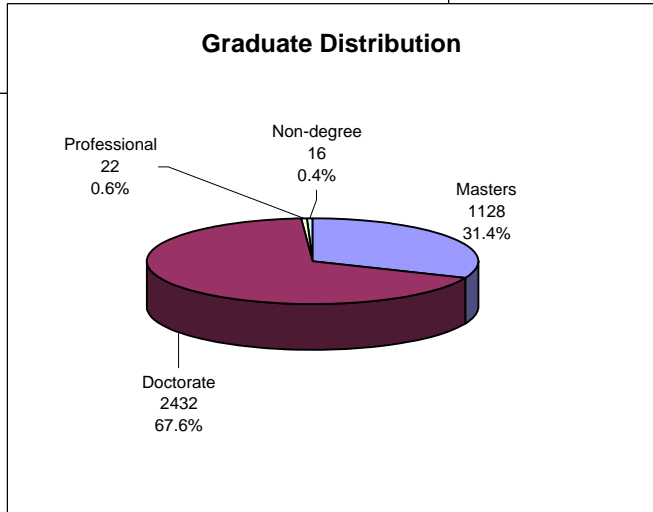
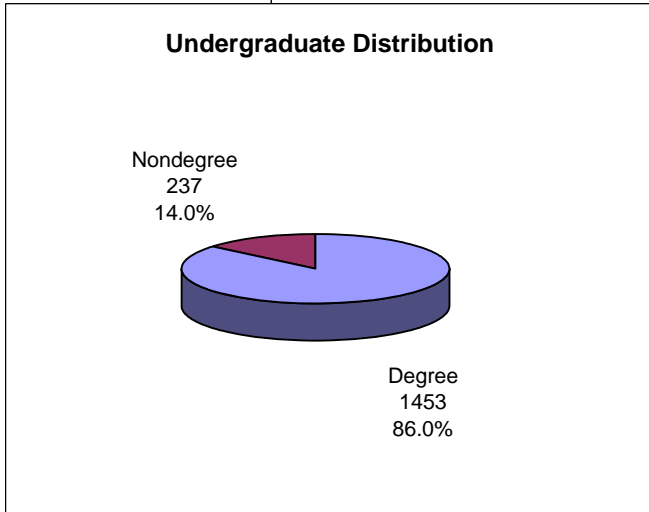
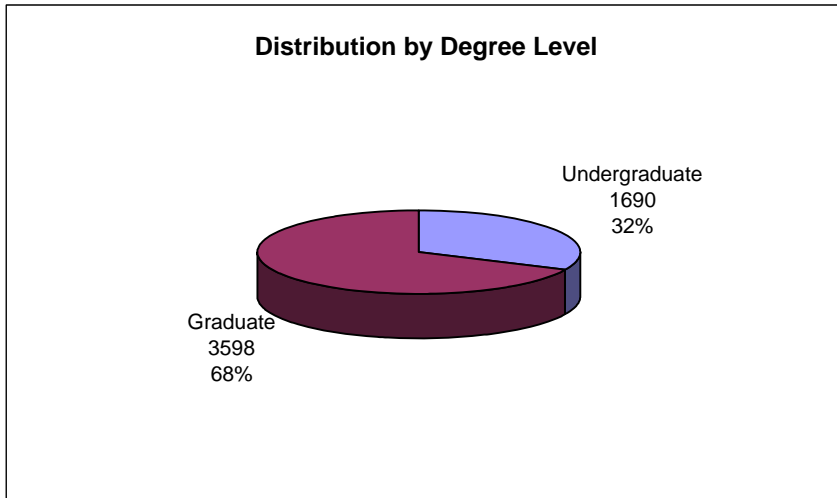
	Undergraduate				Graduate				Grand Total	% UIUC International Enrolled
	Degree	Nondegree	Total	Masters	Doctorate	Professional	Non-degree	Total		
Education	6	1	7	23	171	0	0	194	201	3.80%
Curr & Instruction	3	0	3	10	67	0	0	77	80	1.51%
Educ Org & Ldrship	0	0	0	0	2	0	0	2	2	0.04%
Educ Policy Studies	0	0	0	0	19	0	0	19	19	0.36%
Educ Psychology	0	0	0	0	51	0	0	51	51	0.96%
Human Res Educ	0	0	0	10	25	0	0	35	35	0.66%
Special Education	0	0	0	3	7	0	0	10	10	0.19%
Undeclared	3	0	3	0	0	0	0	0	3	0.06%
Exchange	0	1	1	0	0	0	0	0	1	0.02%
Engineering	415	100	515	277	1023	0	2	1302	1817	34.36%
Aero/Astro Eng	15	0	15	24	13	0	0	37	52	0.98%
Bioengineering	5	0	5	1	11	0	0	12	17	0.32%
Civil/Environ Eng	22	0	22	49	152	0	0	201	223	4.22%
Computer Science	76	0	76	28	228	0	0	256	332	6.28%
Electrical & Computer Eng	192	0	192	101	176	0	2	279	471	8.91%
Engineering Administration	1	0	1	9	23	0	0	32	33	0.62%
Industrial & Enterprise Systems Eng	35	0	35	16	31	0	0	47	82	1.55%
MATSE	13	0	13	1	87	0	0	88	101	1.91%
Mechanical Science & Eng	49	0	49	45	126	0	0	171	220	4.16%
Physics	4	0	4	0	144	0	0	144	148	2.80%
Plasma/Radiological Eng	3	0	3	3	32	0	0	35	38	0.72%
Exchange	0	100	100	0	0	0	0	0	100	1.89%
Fine and Applied Arts	73	15	88	99	146	0	3	248	336	6.35%
Architecture	28	0	28	32	10	0	3	45	73	1.38%
Art and Design	15	0	15	16	13	0	0	29	44	0.83%
Dance	2	0	2	3	0	0	0	3	5	0.09%
Landscape Arch	4	0	4	8	3	0	0	11	15	0.28%
Music	8	0	8	26	108	0	0	134	142	2.69%
Theatre	1	0	1	4	2	0	0	6	7	0.13%
Urban/Regional Plan	5	0	5	10	10	0	0	20	25	0.47%
Undeclared	10	0	10	0	0	0	0	0	10	0.19%
Exchange	0	15	15	0	0	0	0	0	15	0.28%

Fall 2007 International Student Enrollment by Department, Educational Level, and Class

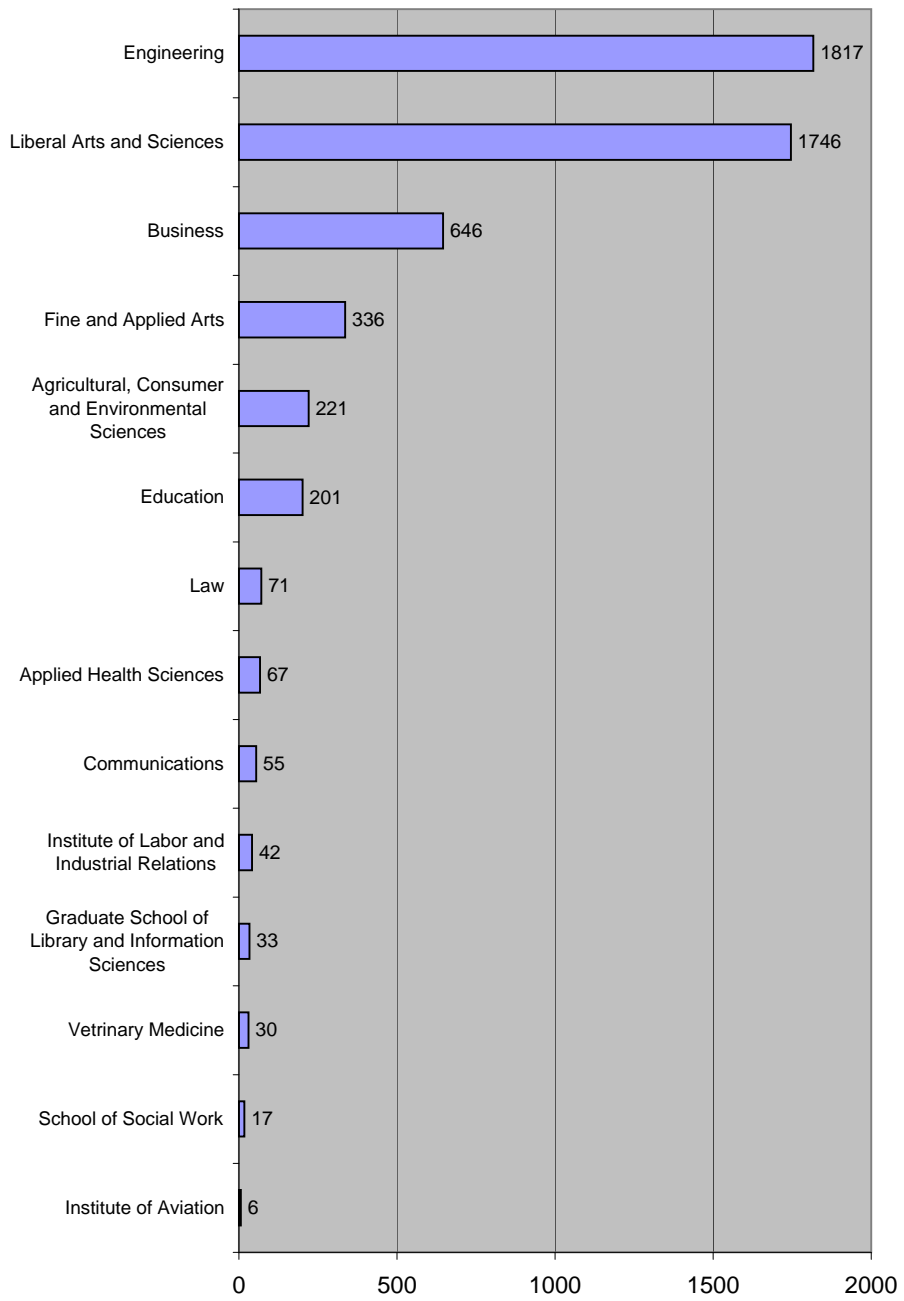
	Undergraduate				Graduate				Grand Total	% UIUC International Enrolled
	Degree	Nondegree	Total	Masters	Doctorate	Professional	Non-degree	Total		
Institute of Labor and Industrial Relations	0	0	0	30	12	0	0	42	42	0.79%
Law	0	0	0	42	10	19	0	71	71	1.34%
Graduate	0	0	0	42	10	0	0	52	52	0.98%
Professional	0	0	0	0	0	19	0	19	19	0.36%
Liberal Arts and Sciences	671	85	756	200	779	0	11	990	1746	33.02%
African Studies	0	0	0	2	0	0	0	2	2	0.04%
Anthropology	1	0	1	0	13	0	0	13	14	0.26%
Astronomy	2	0	2	0	23	0	0	23	25	0.47%
Atmospheric Sci	0	0	0	0	18	0	0	18	18	0.34%
Biochemistry	17	0	17	0	30	0	0	30	47	0.89%
Biological Sciences Program	37	0	37	0	0	0	0	0	37	0.70%
Cell and Structural Biology	0	0	0	0	34	0	0	34	34	0.64%
Chem Eng	36	0	36	3	36	0	3	42	78	1.48%
Chemistry	31	0	31	0	68	0	0	68	99	1.87%
Classics	0	0	0	2	1	0	0	3	3	0.06%
Comparative Lit	1	0	1	5	14	0	0	19	20	0.38%
E Asian Langs	2	0	2	8	17	0	0	25	27	0.51%
Economics	122	0	122	84	56	0	0	140	262	4.95%
English	8	0	8	2	14	0	0	16	24	0.45%
Eng/International Lang	0	0	0	29	0	0	0	29	29	0.55%
Entomology	0	0	0	1	3	0	0	4	4	0.08%
French	0	0	0	0	6	0	4	10	10	0.19%
Geography	1	0	1	1	13	0	0	14	15	0.28%
Geology	1	0	1	2	13	0	0	15	16	0.30%
Germanic Langs	0	0	0	1	1	0	1	3	3	0.06%
History	2	0	2	0	21	0	0	21	23	0.43%
Integrative Biology	3	0	3	2	16	0	0	18	21	0.40%
LAS	48	0	48	0	0	0	0	0	48	0.91%
Linguistics	2	0	2	1	32	0	1	34	36	0.68%
Mathematics	87	0	87	21	79	0	1	101	188	3.56%
Microbiology	0	0	0	0	28	0	0	28	28	0.53%

Fall 2007
International Student Enrollment by Department, Educational Level, and Class

	Undergraduate				Graduate				Grand Total	% UIUC International Enrolled
	Degree	Nondegree	Total	Masters	Doctorate	Professional	Non-degree	Total		
Molecular/Cell Biology	32	0	32	1	82	0	0	83	115	2.17%
Philosophy	2	0	2	0	3	0	0	3	5	0.09%
Physiology	0	0	0	0	15	0	0	15	15	0.28%
Plant Biology	0	0	0	1	3	0	0	4	4	0.08%
Political Science	27	0	27	1	14	0	0	15	42	0.79%
Psychology	46	0	46	2	54	0	0	56	102	1.93%
Religious Studies	0	0	0	0	0	0	0	0	0	0.00%
Russian and Eastern European Studies	0	0	0	0	0	0	0	0	0	0.00%
Slavic Langs	0	0	0	1	4	0	0	5	5	0.09%
Sociology	10	0	10	1	18	0	1	20	30	0.57%
Spanish/Italian/Port	0	0	0	11	29	0	0	40	40	0.76%
Speech Communication	9	0	9	0	2	0	0	2	11	0.21%
Statistics	5	0	5	18	19	0	0	37	42	0.79%
Undeclared	139	0	139	0	0	0	0	0	139	2.63%
Exchange	0	85	85	0	0	0	0	0	85	1.61%
Graduate School of Library and Information Sciences	0	0	0	18	15	0	0	33	33	0.62%
School of Social Work	0	0	0	2	15	0	0	17	17	0.32%
Veterinary Medicine	0	0	0	10	17	3	0	30	30	0.57%
Professional	0	0	0	0	0	3	0	3	3	0.06%
Vet Biosciences	0	0	0	0	9	0	0	9	9	0.17%
Vet Clinical Med	0	0	0	10	3	0	0	13	13	0.25%
Vet Pathobiology	0	0	0	0	5	0	0	5	5	0.09%
GRAND TOTALS	1453	237	1690	1128	2432	22	16	3598	5288	



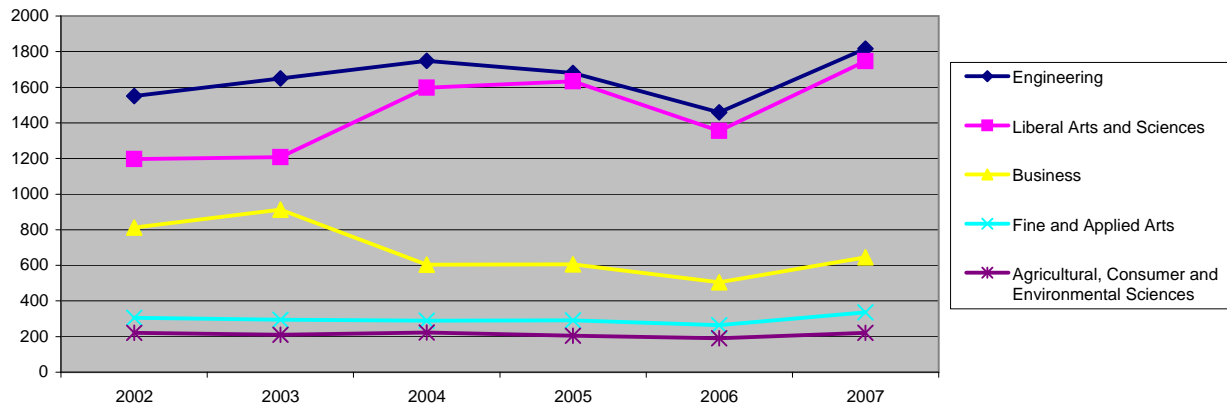
Distribution by College



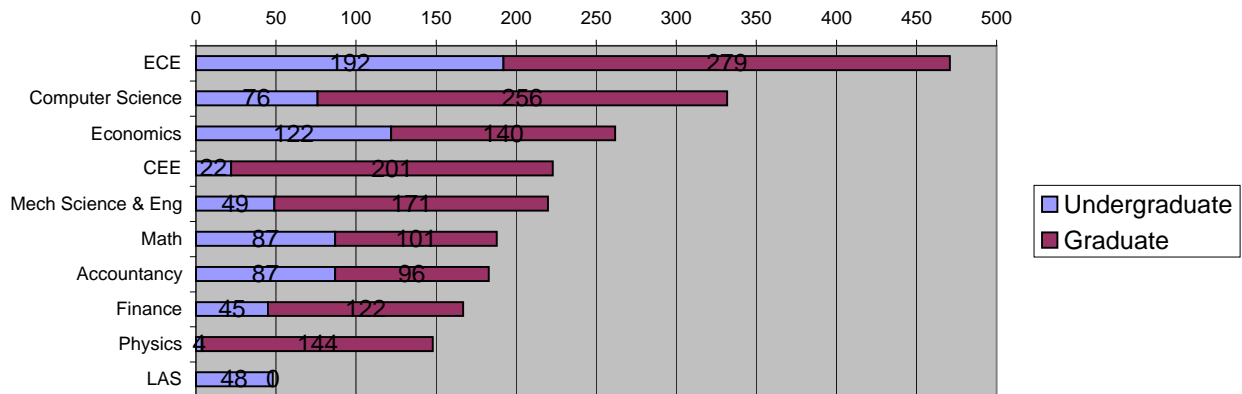
College Enrollment Trends 2002-2007

College	2002	2003	2004	2005	2006	2007	%Change Over Six Years	%Change from Last Year
Agricultural, Consumer and Environmental Sciences	221	211	223	205	190	221	0.0%	16.3%
Applied Health Sciences	61	57	61	61	52	67	9.8%	28.8%
Institute of Aviation	2	2	4	2	3	6	200.0%	100.0%
Business	812	913	604	605	505	646	-20.4%	27.9%
Communications	34	46	42	40	32	55	61.8%	71.9%
Education	206	220	236	227	196	201	-2.4%	2.6%
Engineering	1551	1649	1748	1681	1459	1817	17.2%	24.5%
Fine and Applied Arts	305	295	290	292	264	336	10.2%	27.3%
Institute of Labor and Industrial Relations	18	22	26	24	36	42	133.3%	16.7%
Law	45	44	49	55	56	71	57.8%	26.8%
Liberal Arts and Sciences	1197	1207	1597	1634	1355	1746	45.9%	28.9%
Graduate School of Library and Information Sciences	49	46	38	35	40	33	-32.7%	-17.5%
School of Social Work	16	16	10	10	12	17	6.3%	41.7%
Veterinary Medicine	38	41	35	33	31	30	-21.1%	-3.2%
Total	4555	4769	4963	4904	4231	5288	16.1%	25.0%

Top 5 College Trends 2002-2007



Top Ten Departments*

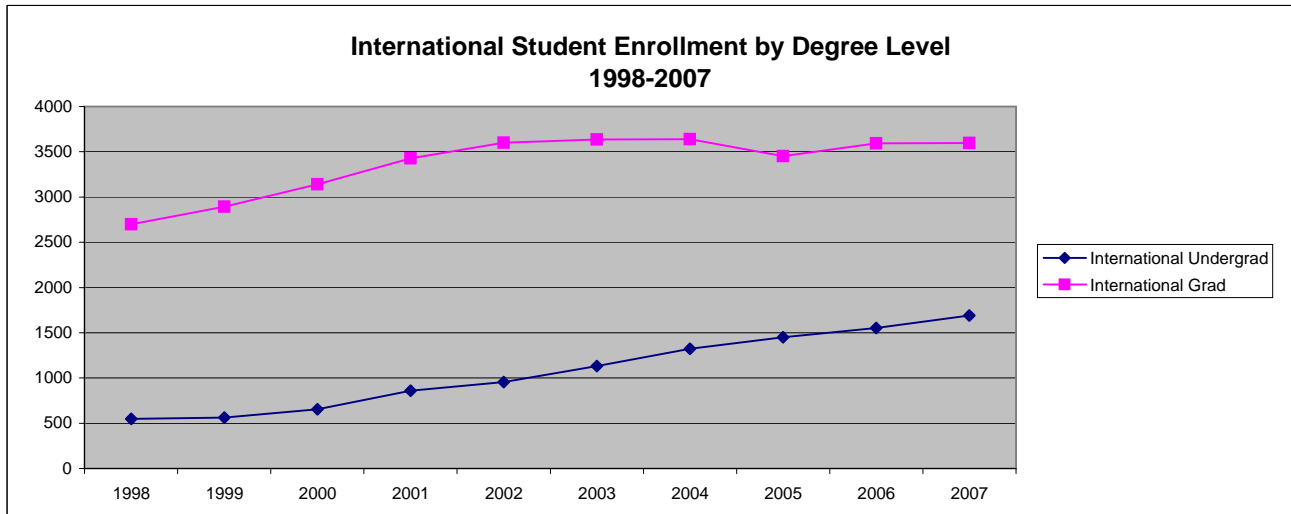
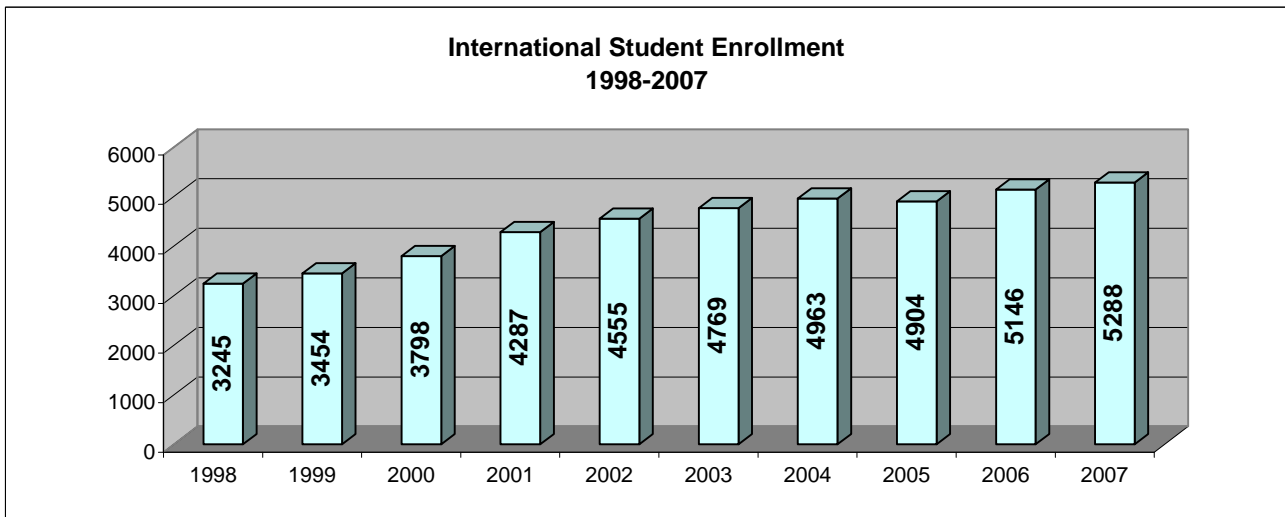


* Exchange students not included

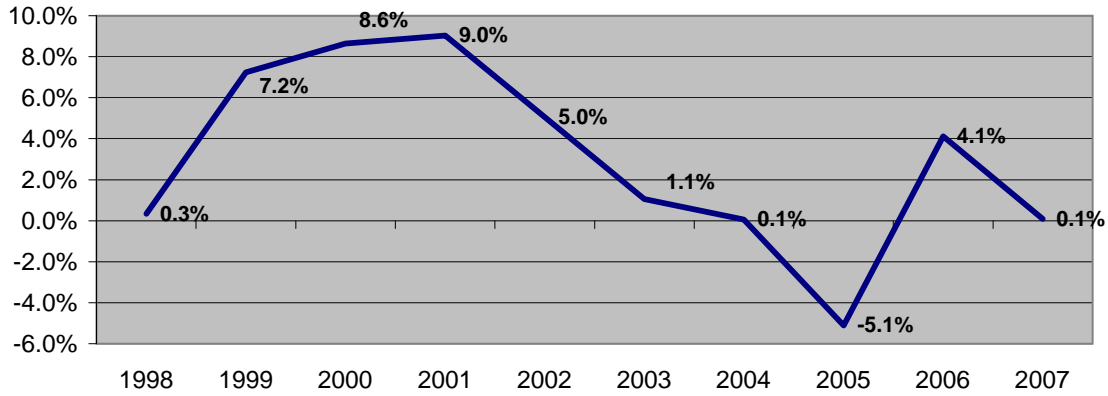
International Student Enrollment by Degree Level (1998-2007)*

	1998	1999	2000	2001	2002	2003	2004	2005	2006	2007
International Undergrad	548	562	656	861	956	1132	1324	1451	1551	1690
UIUC Undergrad	27452	27855	27882	28114	28243	28575	29288	30453	30935	30695
% Int UG of UIUC	2.0%	2.0%	2.4%	3.1%	3.4%	4.0%	4.5%	4.8%	5.0%	5.5%
International Grad	2697	2892	3142	3426	3599	3637	3639	3453	3595	3598
UIUC Grad	8851	8835	9054	9570	10020	10281	10312	10217	10407	10440
% Int Grad of UIUC	30.5%	32.7%	34.7%	35.8%	35.9%	35.4%	35.3%	33.8%	34.5%	34.5%
Total International	3245	3454	3798	4287	4555	4769	4963	4904	5146	5288
Total UIUC	36303	36690	36936	37684	38263	38856	39600	40670	41342	41135
% International of UIUC	8.9%	9.4%	10.3%	11.4%	11.9%	12.3%	12.5%	12.1%	12.4%	12.9%

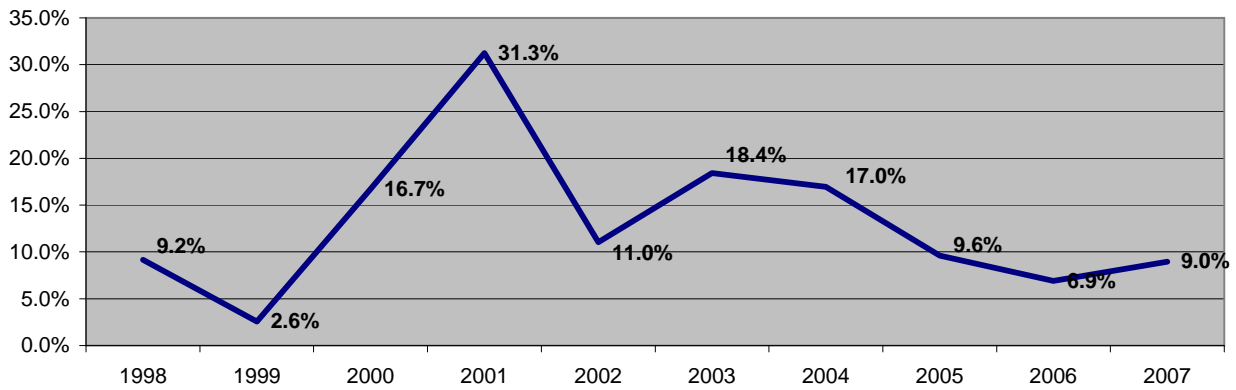
* UIUC totals gathered from 10 day student enrollment statistics produced by the Division of Management Information. Professional students included in graduate student counts.



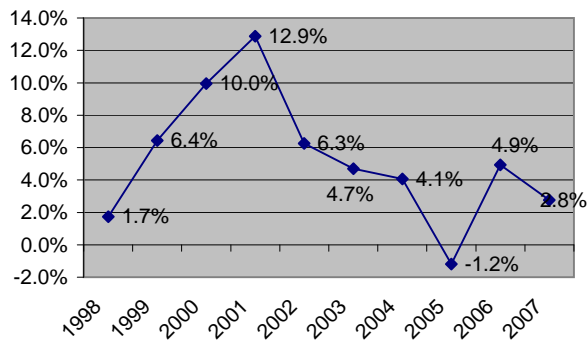
Percent Change in International Graduate Student Enrollment 1998-2007



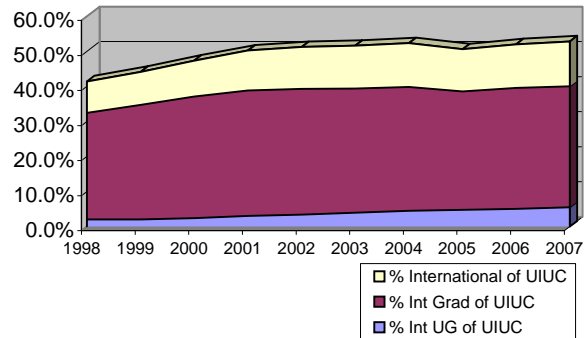
Percent Change in International Undergraduate Enrollment 1998-2007



Percent Change in Enrollment Over Time



International Student Enrollment as a Percentage of Total Student Enrollment 1998-2007



Fall 2007 New International Student Enrollment by College

College	Undergraduate	UG Exchange	Graduate	Grad Nondegree	Totals
LAS	234	81	195	9	519
Engineering	163	94	243	2	502
Business	61	26	98	0	185
FAA	25	15	70	3	113
ACES	19	7	37	0	63
Law	0	0	48	0	48
Education	3	0	31	0	34
AHS	4	1	11	0	16
Communications	0	0	15	0	15
Inst. of LIR	0	0	19	0	19
Vet Med	0	0	7	0	7
Sch. of Soc Work	0	0	3	0	3
LIS	0	0	6	0	6
Inst. of Aviation	0	0	4	0	4
Totals	509	224	787	14	1534

